

## Training the future public health workforce for global transitions



Started in **2005** with 6 partners  
**New partners** in 2016 and 2019

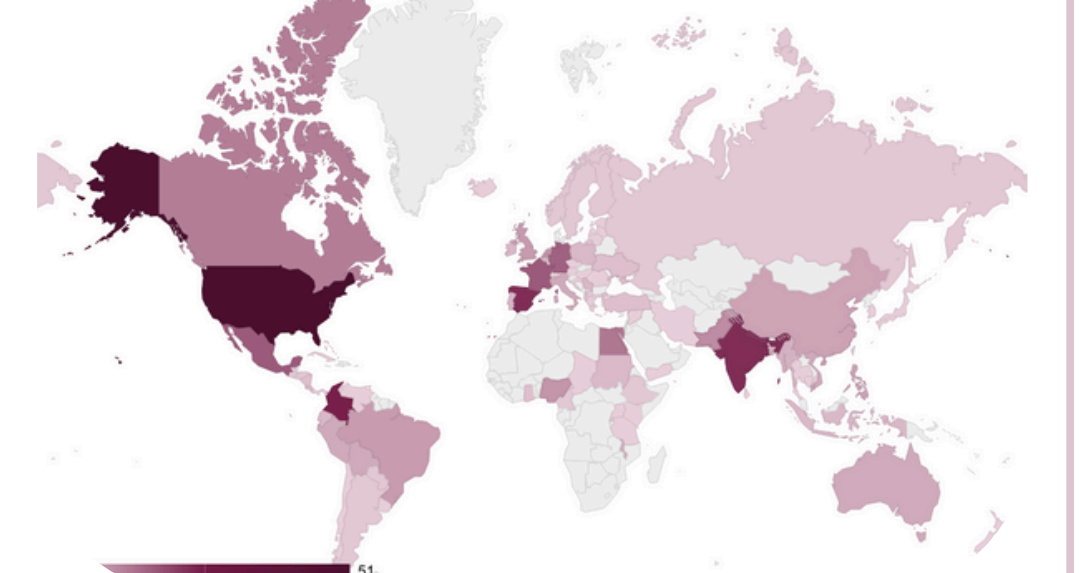
Currently **8** full partners in Europe  
**12** associated partners worldwide: ASPHER, European Observatory on Health Systems, Public Health National Agencies, non-European universities.



### IMPACTS IN TERMS OF ATTRACTIVENESS

- **1600 applications** from **120 countries** in 2023 (50% are eligible)
- **40 enrolled students** per intake, including 40% of self-funded
- **435 alumni** from **93 countries**
- **64%** of eligible applications to the EM scholarships come from **low and lower-middle income countries**

Nationalities of EPH+ Alumni 2006-2023



Source: EPH database, n=435

### IMPACTS IN TERMS OF EMPLOYABILITY

#### 1- Building a competency-based training relevant to labour market needs

EPH+ consortium aims to provide students with the optimal set of competencies required to face the global health challenges. The 2-year programme is built to cover most skills necessary to conduct the 12 Essential Public Health Functions as defined by the World Health Organization (WHO). (1)

How EPH+ integrates the 12 Essential Public Health Functions (EPHFs)

YEAR 1 - 60 ECTS		YEAR 2 - 60 ECTS	
FOUNDATIONS OF PUBLIC HEALTH 57 ECTS	INTEGRATION MODULE 3 ECTS	SPECIALISATION Taught Courses / Internship, Thesis 57 ECTS	INTEGRATION MODULE 3 ECTS
UNIVERSITY OF GRANADA - Andalusian School of Public Health Spain	Building innovative and sustainable solutions to global health challenges  EHESP Rennes France June-July All students Year 1 + Year 2	Health Services Management UGR - EASP Granada, Spain	Building innovative and sustainable solutions to global health challenges  EHESP Rennes France June-July All students Year 1 + Year 2
UNIVERSITY OF SHEFFIELD - SCHARR United Kingdom		Advanced Biostatistics and Epidemiology EHESP Paris, France	
UNIVERSITY COLLEGE DUBLIN School of PHPS		Environmental & Occupational Health Sciences EHESP Paris, France	
UNIVERSITY OF LIEGE Faculty of Medicine Belgium		Governance of Health Systems in Transition Jagiellonian University of Krakow, Poland	
		Leadership in European Public Health UMaastricht, The Netherlands	
		Health Law URennes 1/EHESP Rennes	
		Health Promotion and Prevention EHESP Rennes	

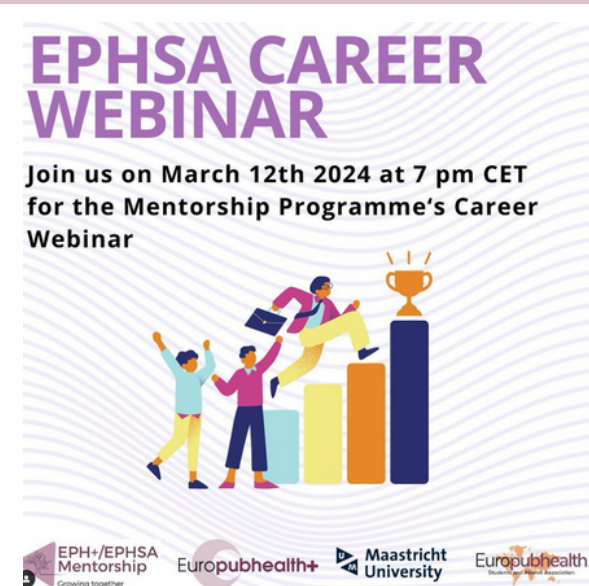
The **first year** addresses **core competencies** in public health

The **second year** enables to focus on a **specific field** among a choice of **7 complementary specialisations**

The **Integration Modules** bring Year 1 and Year 2 students together to explore **sustainable solutions to global health challenges**

How EPH+ integrates the 12 Essential Public Health Functions (EPHFs)

The 12 EPHFs (WHO)	YEAR 1	YEAR 2 specialisations							Integrat. modules
		H. Services Manag. & digital t.	Bio-stats Epidemiology	Health and environment	Leadership in European PH	Governance and economics	Health Law	Health prom. and prev.	
1 - Public Health Intelligence	X	X	X	X					
2 - Emergency management	X		X	X					X
3 - Public health governance, planning	X	X			X	X	X		
4 - Public Health planning and financing	X	X			X	X	X		X
5 - Health Protection	X		X	X			X		X
6 - Disease prevention and early detection	X	X	X	X				X	X
7 - Health Promotion	X	X			X	X		X	X
8 - Communication - participation	X				X		X	X	X
9 - Public Health workforce education	X	X	X	X	X	X	X	X	X
10 - Quality and access to health services	X	X			X	X	X		
11 - Research	X	X	X	X	X	X	X	X	X
12 - Equal and Safe access to medical products	X	X			X	X	X		



#### 2- Fostering employability through programme features

- Mandatory internships up to 6 months
- Mentorship programme and career webinars co-ordinated with the Students and Alumni Association (EPHSA)
- Career Days : 2 days of workshops and meetings with professionals
- Networking (associated partners and employers)

#### 3- Ensuring adequacy between the programme and the labour needs

- Post graduation surveys: 6, 18 and 30 months after graduation
- Self assessment tool based on the WHO-ASPHER competency framework (2)

The consortium adapted the competency framework developed the Association of Schools of Public Health in the European Region (ASPHER) and WHO into a competency self-assessment tool:

- for the programme coordinators: to map the level of proficiency targeted in each competency - this is published on the website for each pathway
- for the students: to assess and measure the evolution of their competencies at the beginning and end of the programme



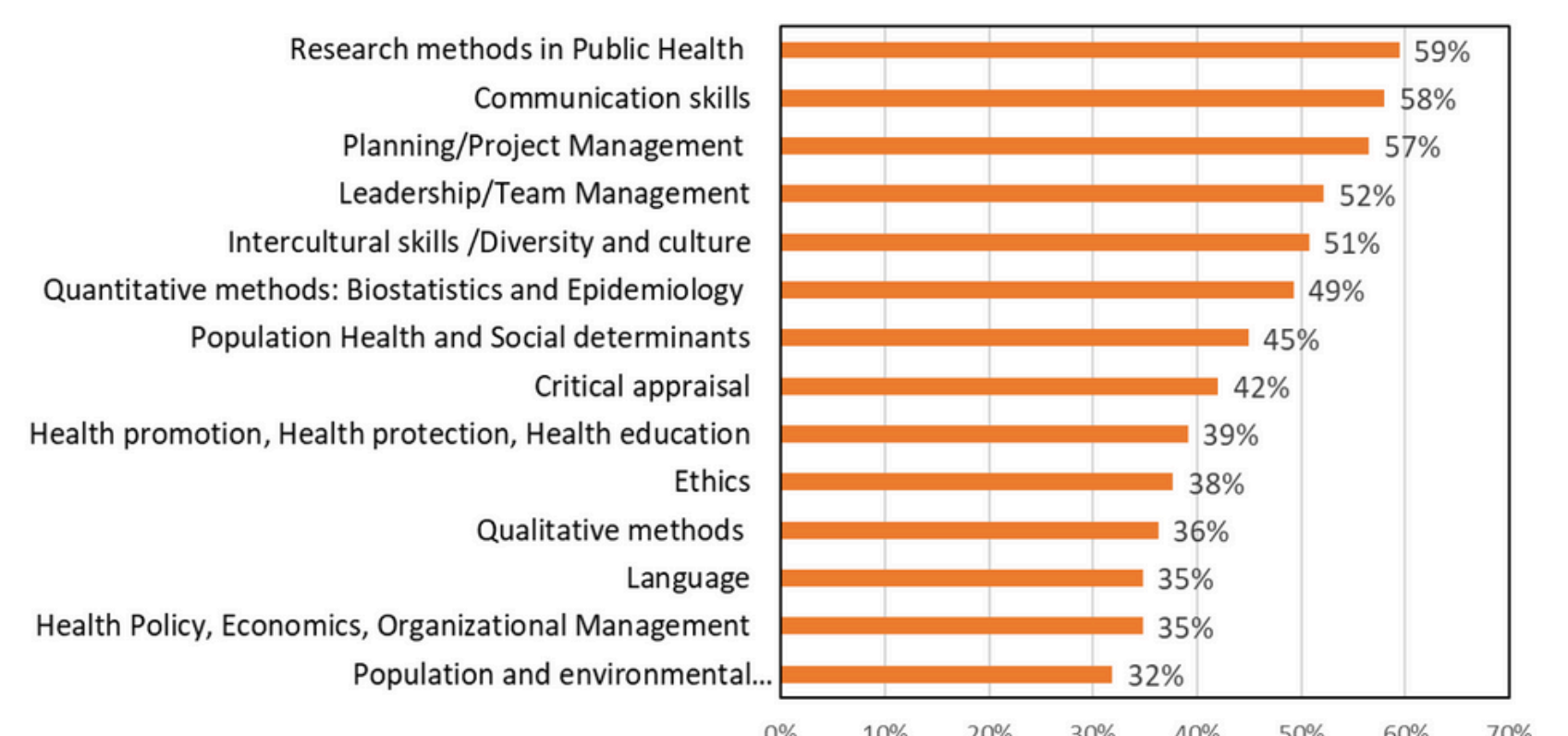
#### Examples of jobs held by EPH+ Alumni

- Epidemiologist
- Public Health Officer/Advisor
- Junior Policy Manager for Digital Health
- Senior Public Health Analyst
- Health Policy Researcher
- Global Health and Wellbeing Projects Manager
- Manager of Community Engagement and Health Promotion Activities

#### High level of employability

79% of Alumni were employed or studying 6 months after graduation (97% after 30 months)

#### Competencies used in the professional context



Source: Postgraduation employment surveys sent in 2022 and 2023 to alumni who graduated between 2019 and 2022: 6 months follow-up n=42 respondents; 18 months follow-up n=24; 30 months follow-up n=42.

(1) <https://www.who.int/teams/primary-health-care/health-systems-resilience/essential-public-health-functions>  
(2) World Health Organization. Regional Office for Europe. (2020). WHO-ASPHER competency framework for the public health workforce in the European Region. World Health Organization. Regional Office for Europe. <https://iris.who.int/handle/10665/347866>

