



Introduction

The Burden due to COVID-19
Project BoCO-19



Benefits of calculating the burden of C-19



Comparability

(Sub)-national differences



Pandemic monitoring

Time trends



Informing Policy

Digitization of Information

- Making use of available data
- Combining information
- Comprehensible methodology
- Capacity building



Collaboration, Transparency,
Timeliness, Freedom of information



BoCO-19 Project

The Burden of Disease due to COVID-19:

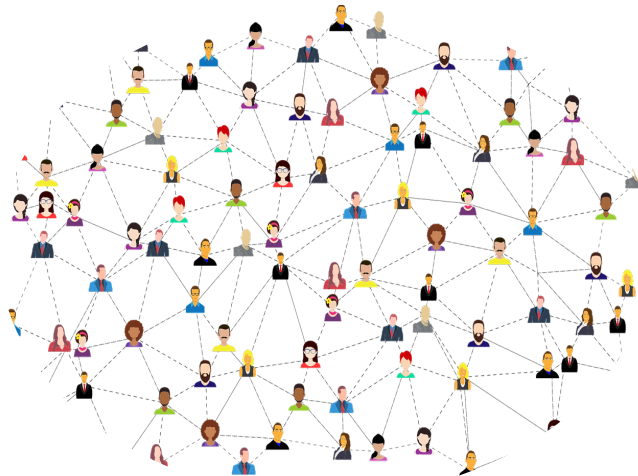
Towards a harmonization of population health metrics for the surveillance of dynamic outbreaks.

Specific objectives

- Adapt and refine the existing methodology for calculating the burden of disease due to COVID-19 in a cross-country analysis
- Review, clean and collate existing time differentiated COVID-19 morbidity and mortality data in each of the partner countries
- Support and capacity building for calculation (YLL, YLD, DALY) and communication of the Burden of COVID-19
- Dissemination of methodology and results



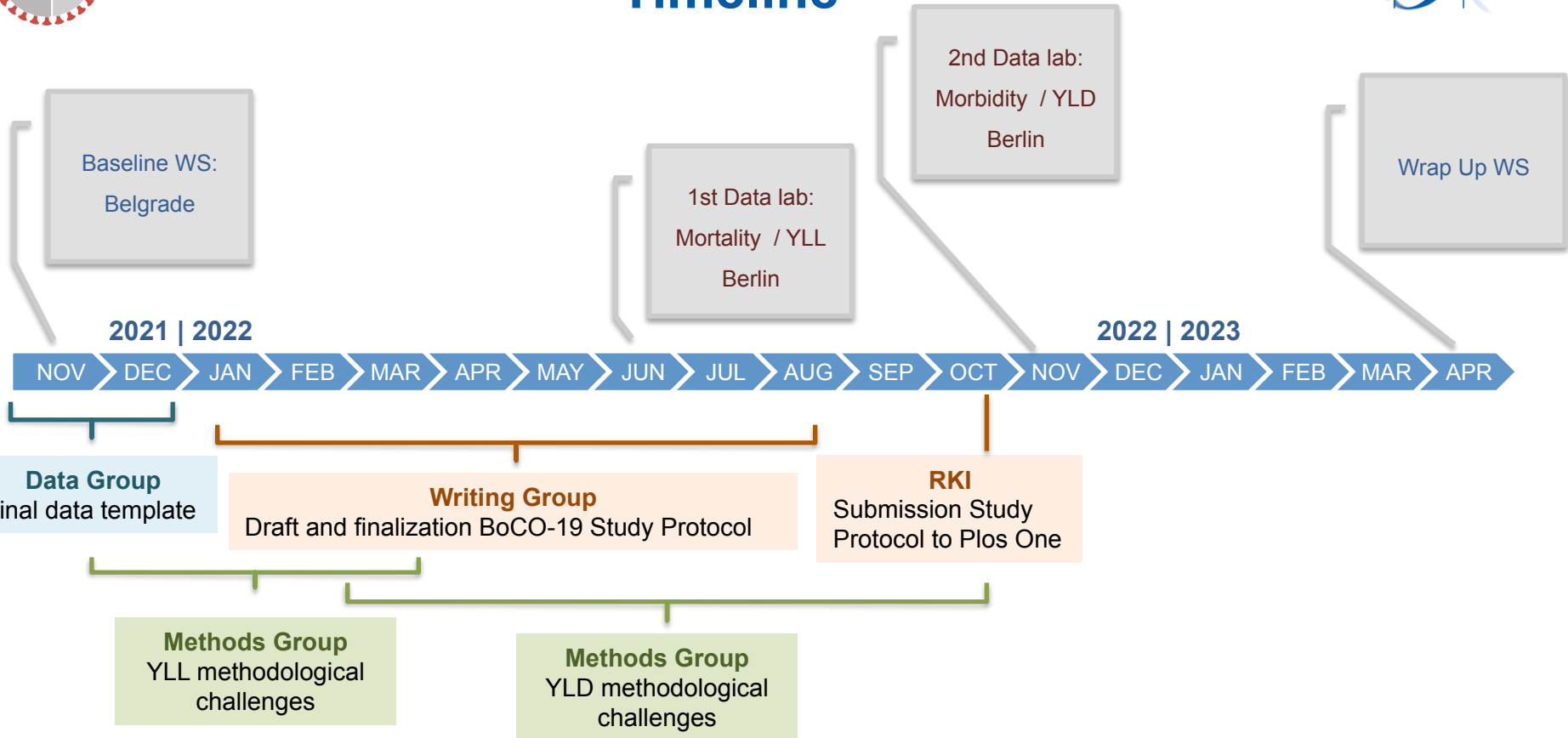
Network of international project partners



Coordinator – RKI Germany	
Partners	
South-East Europe	Southern Caucasus / Central Asia
<ol style="list-style-type: none"> 1. Serbia 2. Albania 3. Bosnia and Herzegovina (2 partners) 4. Kosovo 5. Montenegro 6. Turkey 	<ol style="list-style-type: none"> 1. Kazakhstan 2. Azerbaijan 3. Georgia 4. Kyrgyzstan 5. Mongolia 6. Ukraine 7. Uzbekistan



Timeline





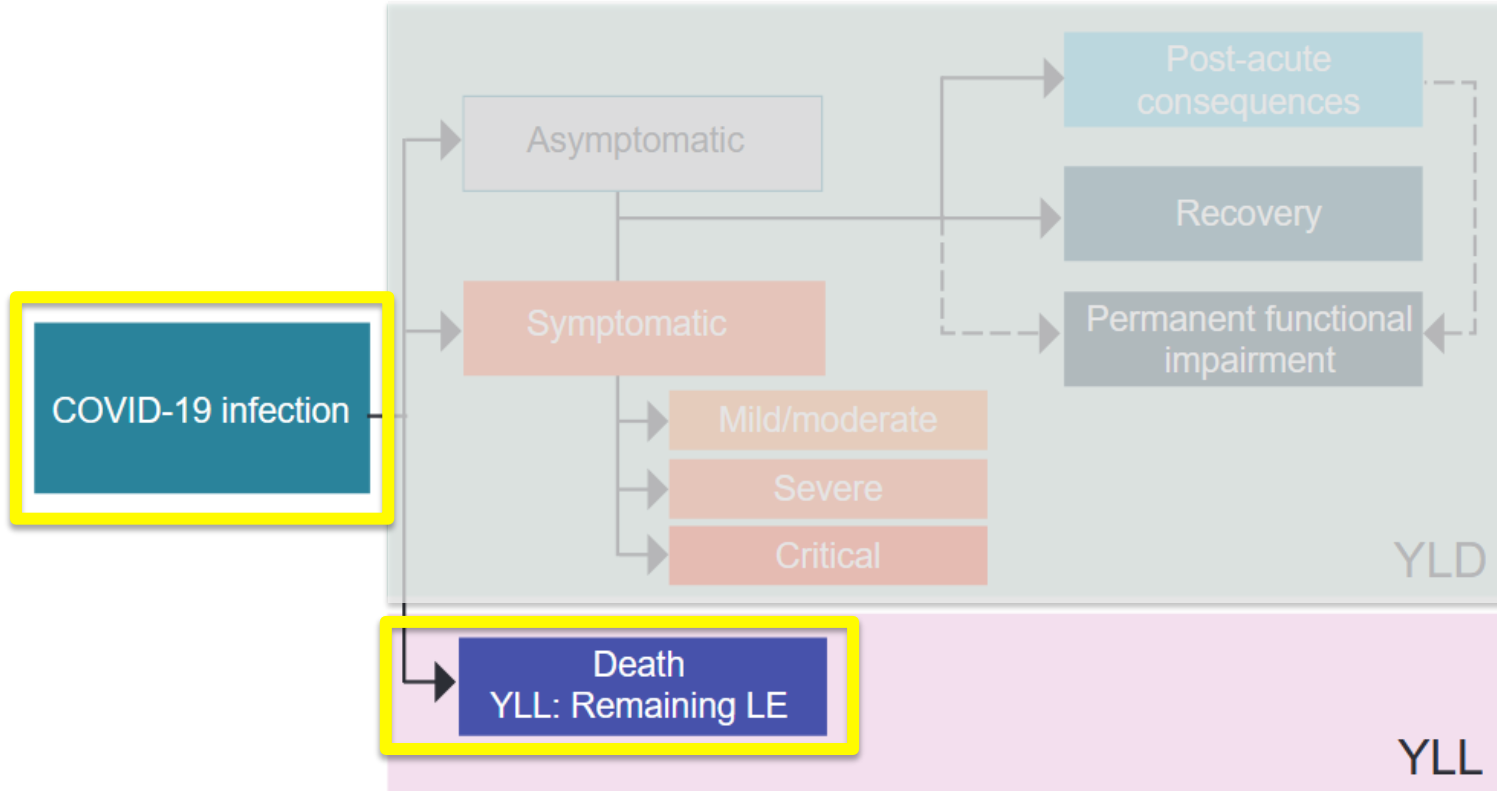
BoCO-19

ROBERT KOCH INSTITUT



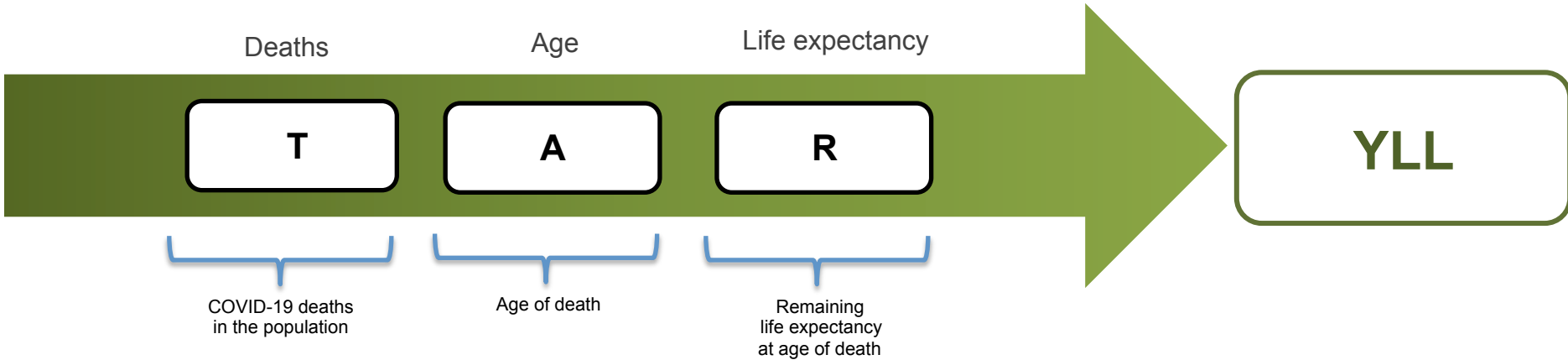
Благодарю! *teşekkürler!*
faleminderit! *Rahmet!*
გმადლობთ
Дякую!
rahmat! *Hvala!*
Баярлалаа!





Inputparameter

- for YLL -



$$YLL_{a,s,r,c} = \sum_{w=1}^t i_{w,s,r,c} * rle_w$$

a	age
s	sex
r	region
c	cause of death
t	age year
rle	remaining life expectancy



Use case „Basic“

with extensions

YLL

for a predefined time period (e.g. for 2020) by age and sex

Deaths

- # of **all-cause deaths** in population by age and sex (EXCESS MORTALITY)
 - # of **C-19 deaths** by age and sex
- ⇒ *two alternatives to count deaths*

Population

- Total **population** by age and sex
 - **Life expectancy** by age:
 - national (statistical office) or
 - global (e.g. taken from WHO)
- ⇒ *two alternatives to measure loss of life*

Extensions 1 & 2: Trends and region

Deaths additionally

- on a **daily/weekly/monthly/quarterly** basis
- and/or by **region**

Extensions 1 & 2: Trends and region

Total population additionally

- by **region**



Life expectancy and standard population

Cross-country comparison

Life expectancy

- GBD LE table -> enables comparisons with other external studies

Standard population

- GBD World Standard Population
-

Other standards for other purposes (e.g. single country publications); e.g.

- national LE tables
- European Standard Population (ESP)

