

The 2019 EUPHA Law Enforcement and Public Health Lecture

Public Health Problems are multidisciplinary: why do we train for them separately?

Professor John Middleton, President, the Association of
Schools of Public Health in the European Region

What is ASPHER ?

The Association of Schools of Public Health in the European Region (ASPHER) is the key independent European organisation dedicated to strengthening the role of public health by improving education and training of public health professionals for both practice and research.

We have 120 member schools of public health in Europe and associates around the globe.

We are part of the WHO Coalition of Partners in European public health

And we are developing our partnerships with sister public health organisations in America, Africa, Asia, Australasia and the Arab world

What is EUPHA ?

- An umbrella organisation for public health associations and institutes in Europe. EUPHA now has 86 members from 47 countries:
- EUPHA is an international, multidisciplinary, scientific organisation, bringing together around 25'000 public health experts for professional exchange and collaboration throughout Europe.
- We encourage a multidisciplinary approach to public health.

Public Health Problems are multidisciplinary:
why do we train for them separately? John
Middleton, LEPH 2019

My experience in law enforcement and public health

- Director of Public Health in Sandwell in the West Midlands of England for 27 years
- Experience of 40 years of working with the police in public health and safety issues
- 19 years working with the 'Safer Sandwell' Crime and disorder partnership
- Member and chair of Sandwell Drug and Alcohol Partnership 1995-2009
 - The Campbell collaboration
 - West Midlands Crimegrip[®]
- UK Faculty of Public Health: role of public health in violence prevention
 - Knife crime, and *the public health approach to preventing crime*

Public Health Problems are multidisciplinary:
why do we train for them separately? John
Middleton, LEPH 2019

Public health is :

**The science and art of promoting health and wellbeing,
preventing disease and prolonging life through the
organised efforts of society**

Acheson 1988, after Winslow 1920, WHO 1948

Public Health Problems are multidisciplinary:
why do we train for them separately? John
Middleton, LEPH 2019

Other relevant definitions for the public's health and safety:

Sustainable development:

‘protecting resources from one generation to the next’ (Brundtland 1986)

Environmental justice:

‘the pursuit of equal justice and equal protection under the law for all environmental statutes and regulations without discrimination based on race, ethnicity, and /or socioeconomic status.’

Security:

freedom from danger, social, military, environmental (UNDP 1994)

Public Health Problems are multidisciplinary:
why do we train for them separately? John
Middleton, LEPH 2019

Coventry public health and police work 1983-1987

1. Coventry Health Promotion Committee
 - Accident prevention
 - Health of staff in partner agencies
2. Children's safeguarding
3. Child and adolescent mental health review

Coventry: a no drinking-driving city by the year 2000?

Coventry City Council, Coventry Health Authority, and Coventry and Warwickshire Alcohol Advisory Service are planning to make Coventry a no drinking and driving city by the year 2000. In 1985, 25 people died on the roads in Coventry, and eight of these deaths could be attributed to alcohol. In the same year we estimate that 140 injuries on the road were related to alcohol. National action will, we believe, be necessary to reduce alcohol associated injuries on the roads, but local action will also be important.

Random static road side breath testing to prevent drinking-driving, Finland





SANDWELL HEALTH AUTHORITY

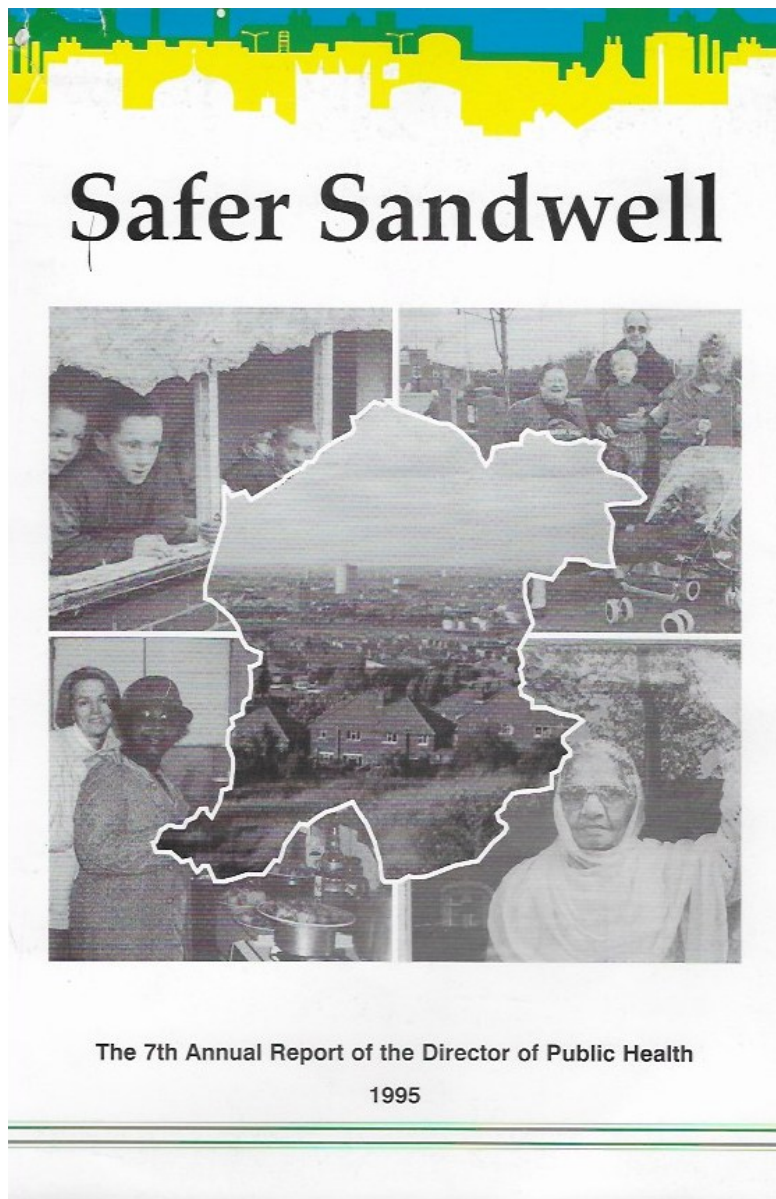
*Life and Death
in Sandwell*



Included chapters on all WHO 'pre-requisites for health' from Health for All Strategy

including violence –

Peace, 'being more than the absence of war'



CONTENTS

1. Safer Sandwell	1
2. Child protection	9
3. Bullying in schools	15
4. Child-friendly Sandwell	23
5. Environment and safety	29
6. Safe as houses	41
7. Safe at home	49
8. Road safety	51
9. Economic safety	55
10. Crime, violence and safety	65
11. Drugs and alcohol	85
12. Race and crime	101
13. Report of the Director of Public Health	107
14. Public Health Archive	111
15. Safer Sandwell - a summary of references including translations in community languages	125
16. References	138

Public Health Problems are multidisciplinary:
why do we train for them separately? John
Middleton, LEPH 2019

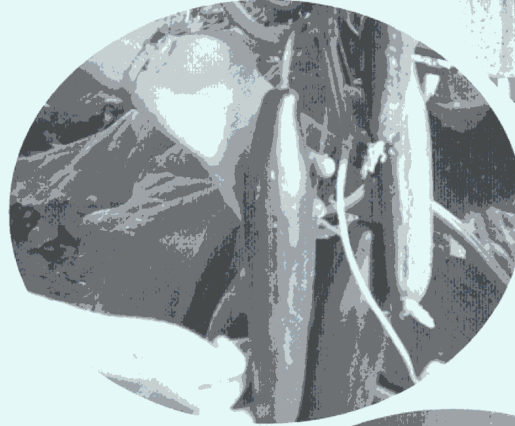


**International review of best available research
evidence on most effective social and educational
interventions to prevent crime and improve
educational, social and health outcomes**

www.campbellcollaboration.org

What **Works?**

For Health in Sandwell



Public Health Problems are multidisciplinary:
why do we train for them separately? John
Middleton, LEPH 2019

West Midlands Crimegrip

- Early years interventions
 - Mild to moderate behaviour disturbance in children
- Peer education and interactive education programmes of drugs education
- Harm reduction approaches to drug treatment and rehabilitation
 - Cognitive behavioural approaches to offender rehabilitation
 - Streetlighting
 - CCTV
 - Restorative justice
- Alcohol brief interventions
 - Scared straight

Law,

Ethics,

Rights,

Values

(LERV)!



Scotland's National Action Plan for Human Rights

[Home](#) [What is SNAP?](#) [Action Areas](#) [Accountability](#) [How SNAP was developed](#) [Contact Us](#)

Search ... 



Scotland's National Action Plan for Human Rights

Text Size: [A](#) [AA](#) [AAA](#)



Scotland's National Action Plan for Human Rights (SNAP) was launched on International Human Rights Day, 10 December 2013. It sets out a bold roadmap towards a Scotland where everyone can live with human dignity.

SNAP is the first National Action Plan for human rights in any part of the UK and draws from experiences of countries all over the world as well as guidance from the United Nations and the Council of Europe.

Based on evidence and broad participation, SNAP has been developed by a Drafting Group from across the public and voluntary sectors. An Advisory Council, whose members reflect the diversity of Scottish civic life, oversaw the process.

It is not a traditional action plan but a transformative programme of action including agreed outcomes, priorities and a process for working together from 2013–2017. SNAP will coordinate action by a wide range of public bodies and voluntary organisations towards achieving the vision of a Scotland where everyone can live with human dignity, where social justice, equality and empowerment are the hallmarks of our society.

On Human Rights Day 2016, a reception was held at the Scottish Parliament to showcase the key SNAP achievements to date: [see more information](#) and [watch the video here](#).



Better Culture



Better Lives



Better World

Human rights – from the top

The impact of inequality on health holds Scotland back ...Our goal is to ensure that the evidence we provide and the practical support we offer leads to everyone in Scotland achieving the highest attainable standard of health. That can only be achieved by maintaining a sharp national focus on the right to health and on those experiencing the worst inequalities”.

“



UK Responsibility deal failed to deliver - control of advertising and marketing to young people

Was used to delay regulatory and fiscal actions to increase real price of alcohol

Scotland 1 year into Minimum unit price, Wales about to implement as has been done now in British Columbia, Saskatchewan and soon in South Africa

Early signs of reduced consumption and reduced alcohol harms

News > Health

Alcohol sales in Scotland hit 25 year low after minimum unit pricing introduced

'Alcohol companies are profiting from people's harm and Westminster needs to put its foot on the accelerator to catch up with Scotland' charities say

Alex Matthews-King Health Correspondent |

Wednesday 19 June 2019 07:03 |



Cheap, caffeinated, fortified wine Buckfast has been associated with harmful drinking and has been hit by minimum unit pricing alongside strong ciders and spirits (Getty Images)



Areas of action for the public health community in preventing violence

- ✓ **The epidemiology of violence**
- ✓ **Evidence-based violence prevention: a life course approach**
- ✓ **Asset based community development**
- ✓ **Primary, secondary & tertiary prevention role of the public health community as primary preventers of violent conflict, through healthy public policies and tackling major social inequalities in health; and as early reactors, mitigaters and responders to violence.**
- ✓ **New public mental health approaches**
- ✓ **A role for public health in conflict resolution with aid agencies, political scientists, theologians and international lawyers**
- ✓ **A role for public health educational bodies**
- ✓ **A leadership and partnership role for public health**

www.fph.org.uk/uploads/Violence%20report.pdf

The role of public health in the prevention of violence



A statement from the UK
Faculty of Public Health

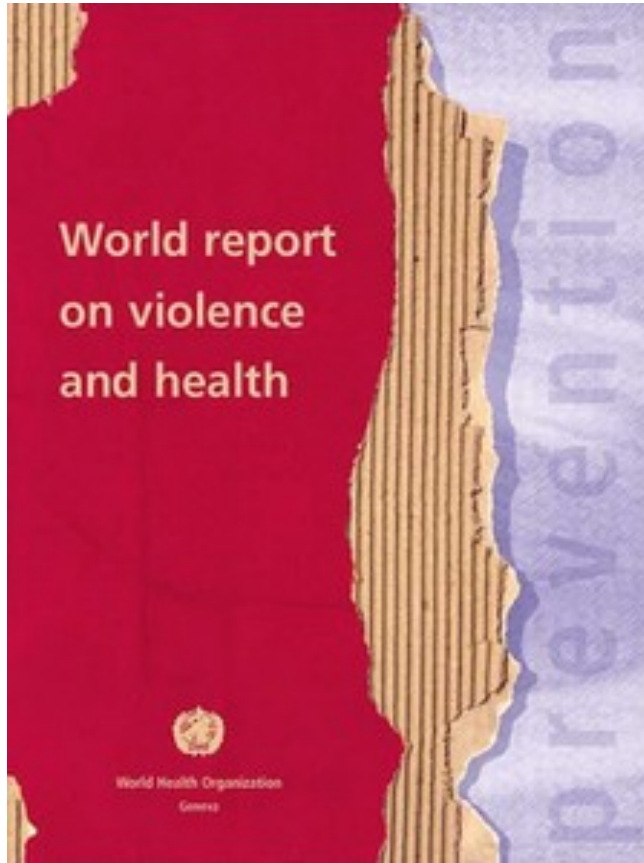
Protecting people Promoting health

A public health approach to violence prevention for England



North west Public
Health Observatory,
Liverpool John
Moore's University.
Mark Bellis et al

Violence – a public health problem



“

Violence is often predictable and preventable. Like other health problems, it is not distributed evenly across population groups or settings.

Many of the factors that increase the risk of violence are shared across the different types of violence and are modifiable.”

Gro Harlem Brundtland (WHO 2002)

Policing, Health and Social Care consensus: working together to protect and prevent harm to vulnerable people

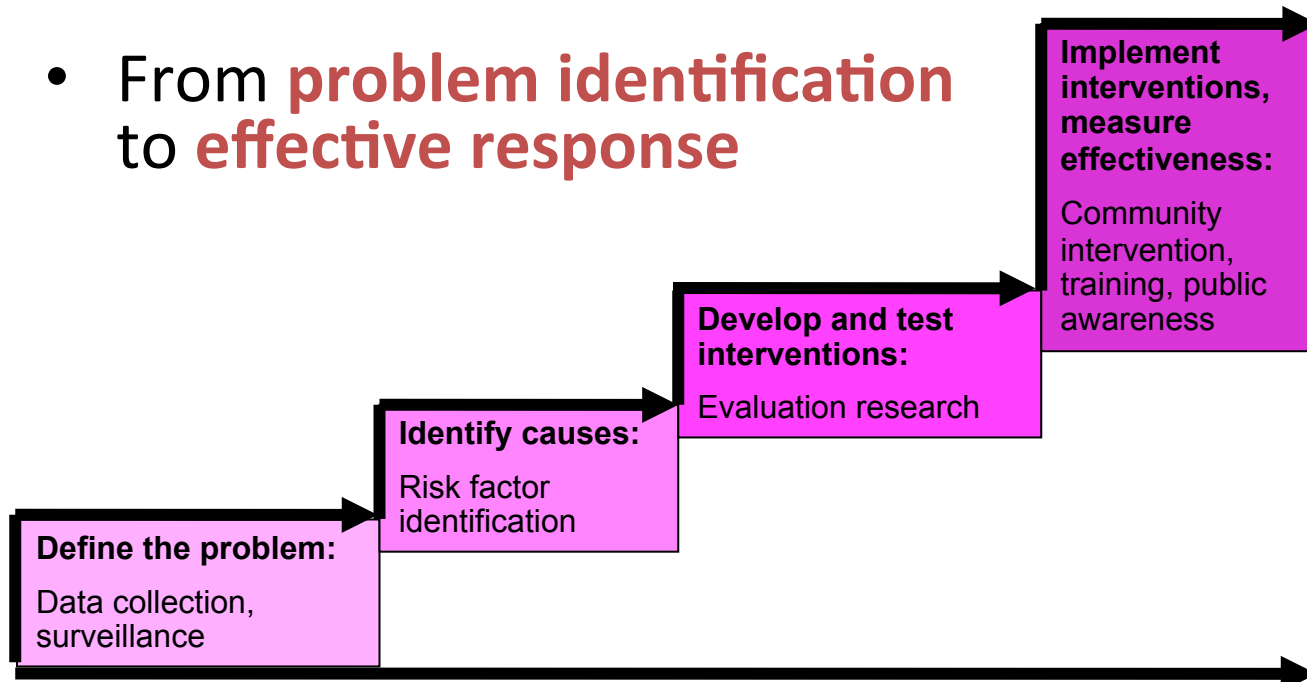
February 2018



The cover features logos for Public Health England, Police and Health, and the College of Policing at the top. The title 'Public health approaches in policing' is prominently displayed, followed by the subtitle 'A discussion paper'. The central illustration depicts a city skyline with four red location pins overlaid on it. Each pin contains an icon representing a different professional: a doctor, a police officer, a social worker, and a family. Below the city, a road shows a car, a cyclist, and a van. The authors' names, Helen Christmas and Justin Srivastava, are listed at the bottom.

A public health approach to violence

- From **problem identification** to **effective response**



(Adapted from: Mercy et al. 1993)

ReVista

HARVARD REVIEW OF LATIN AMERICA

HOME / DOCUMENTS / VIOLENCE: A DAILY THREAT (WINTER 2008) / THINKING ON VIOLENCE /

Violence is a Public Health Issue



A bullet pierces a medellin window. Photo by Steve Ferry

Dealing with Risk Factors

By Rodrigo Guerrero

Dealing with Risk Factors

By Rodrigo Guerrero

When you think of violence and how to control it, often the first thing that comes to mind is security. However, violence control is no longer seen as the exclusive domain of the police and the criminal justice system. Violence has become a public health issue, and social, political and behavioral scientists, as well as mental and public health specialists, are participating in a lively and transnational discussion.

Violence began to be seen as a public health issue in the modern world only recently. In 1992, U.S. Surgeon General Everett Koop declared violence a public health emergency. In 1993, health ministers throughout the Americas adopted a joint resolution declaring violence prevention a public health priority.



How Scotland reduced knife deaths among young people

Treating knife crime as a health issue has led to a dramatic drop in stabbings: of the 35 deaths of young people in Britain this year, none were in Scotland

Gary Young and **Caelainn Barr**

Sun 3 Dec 2017 13.48 GMT

Met police chief to visit Scotland for ideas to reduce knife crime

Cressida Dick will travel to Glasgow to hear how stabbings were dramatically reduced



▲ Police and a forensics tent at the scene of a stabbing in Camden, north London, which took place on Tuesday night. Photograph: Yui Mok/PA

The Metropolitan police commissioner is travelling to Scotland to seek a solution to London's knife crime epidemic, after **two men were stabbed to**

VIOLENCE
PREVENTION
ALLIANCE



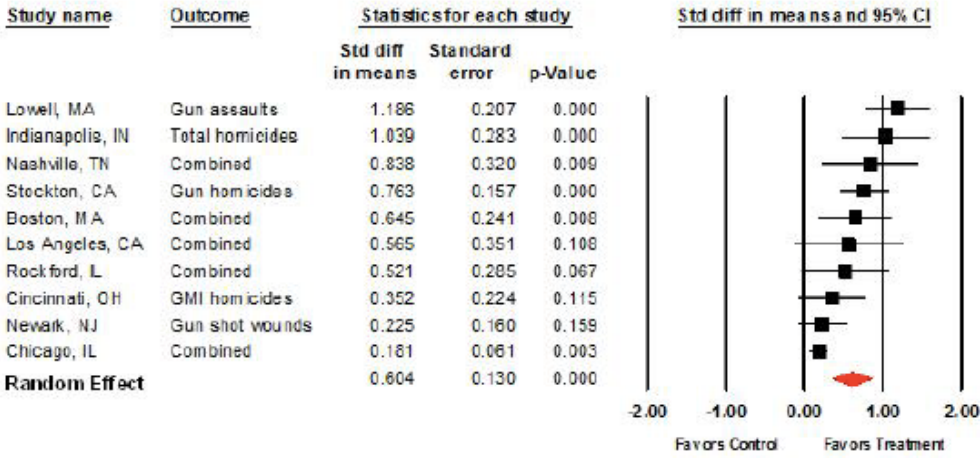
GLOBAL CAMPAIGN FOR VIOLENCE PREVENTION
CAMPAGNE MONDIALE POUR LA PREVENTION DE LA VIOLENCE
VIOLENCE PREVENTION ALLIANCE / ALLIANCE POUR LA PREVENTION DE LA VIOLENCE

Cure Violence (previously The Chicago Project for Violence Prevention)

Cure Violence
School of Public Health
University of Illinois at Chicago
USA
Tel: 01 616 329 5532
www.cureviolence.org

Cure Violence was founded in 1995 at the University of Illinois at Chicago School of Public Health. Launched under the names "The Chicago Project for Violence Prevention" and "CeaseFire" it was designed to engage youth and mediate high-risk conflicts before they turn violent.

10.1 MEAN EFFECT SIZES FOR AREA OUTCOMES



Meta Analysis

Campbell Systematic Reviews
 2012:6
 First published: 02 April 2012
 Last updated: March 2012
 Search executed: September 2010

The Effects of “Pulling Levers” Focused Deterrence Strategies on Crime

Anthony A. Braga and David L. Weisburd



EDITORIALS

Preventing violent crime

Partnerships between health, education, social, and police services are essential

John Middleton *president*, Jonathan Shepherd *professor of faciomaxillary surgery*

UK Faculty of Public Health,

The recent surge in killings in north London has created public outcry. The Metropolitan police are investigating 55 murders in London so far this year. There have been welcome calls for a “public health approach” to tackling violent crime.¹ But what does that entail?

Public health has a role in identifying risk and protective factors, monitoring and understanding the changing threat of violence, and supporting the development of a robust evidence base around what works for prevention and control.²⁴

rise in the supply, use, and purity of crack cocaine.^{8,13} Suppliers are increasingly reaching out beyond their urban bases to hubs in other towns and rural areas, recruiting young or vulnerable people to help store and supply drugs or move cash (the “county lines” distribution).¹⁴ A pernicious use of social media is facilitating this,¹⁵ bringing new drugs, new violence, new human trafficking, and new drug related deaths and harms to places not previously in the headlines.

Many supportive public services have been lost or reduced;



LETTERS

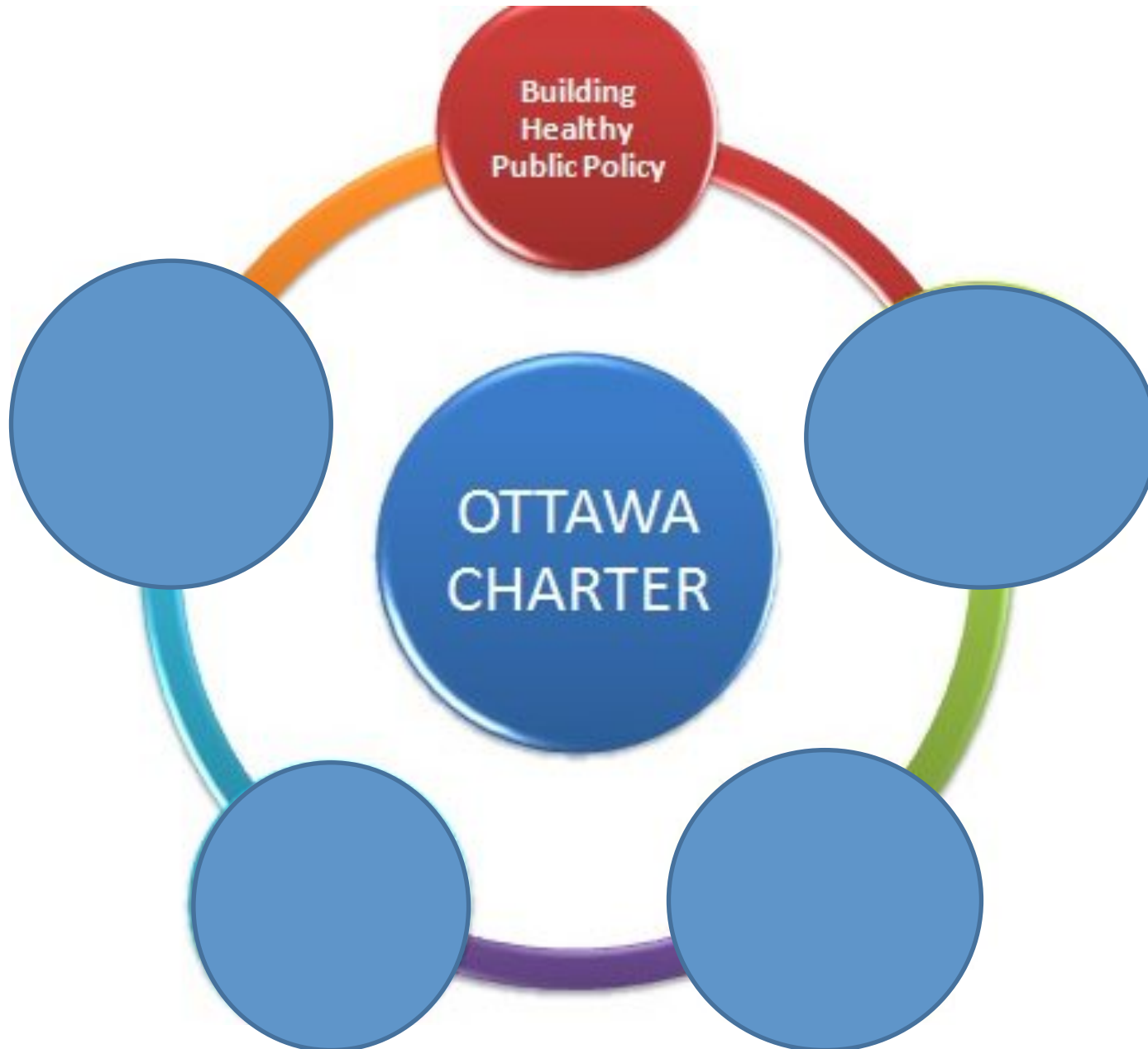
PUBLIC HEALTH AND KNIFE CRIME

Tackling the knife violence epidemic requires a radical upgrade in public health investment

Laura Cattermole *foundation doctor in public health*, Padmanabhan Badrinath *consultant in public health medicine*, Abdul Razaq *director of public health and protection*

Public Health Suffolk, Endeavour House, Suffolk County Council, Ipswich IP1 2BX, UK





Navigator



Working in emergency departments in Glasgow, Edinburgh and Ayrshire Navigator aims to help stop the revolving door of violent injury in our hospitals.

Welcome to The National Prisoner Healthcare Network

What is The National Prisoner Healthcare Network?

The National Prisoner Healthcare Network is a national network that aims to support the health inequalities agenda and reduce re-offending. We do this by working closely with partners in the Health and Justice sector and in the third sector working with Public Social Partnerships and voluntary agencies.

Quicklinks

- Advisory Board
- Prison Health and Care Research in Scotland
- Prison Pharmacy Group
- Short Life Working Groups
- Clinical IT
- Education and Training
- Research
- Third Sector Engagement
- Subscribe to our Newsletter

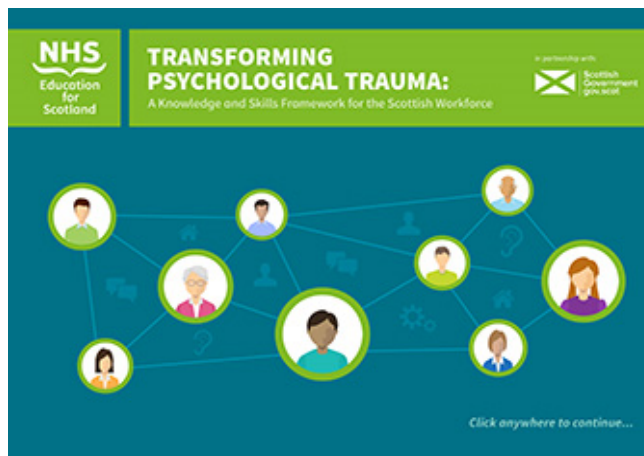
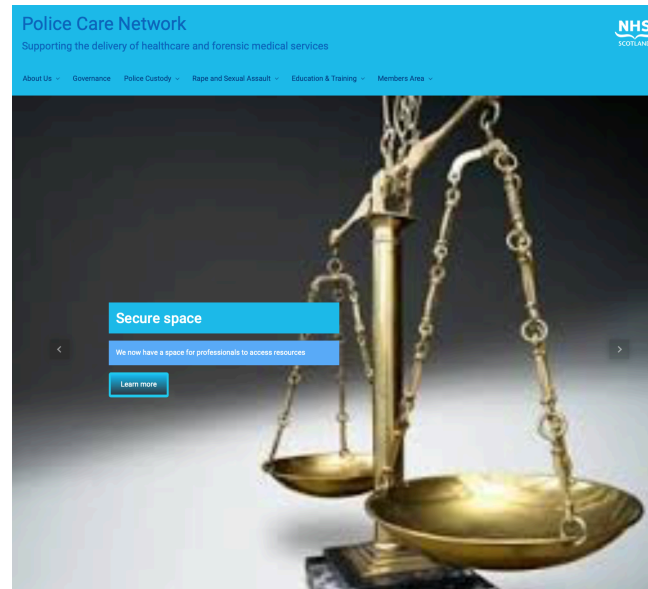
Health and Justice Collaboration Improvement Board

Overview

The Board draws together senior leaders from Health, Justice and Local Government. Its purpose is to lead the creation of a much more integrated service response to people's needs in key areas where Health and Justice services intersect.

The Health and Justice Collaboration Improvement Board has three priority areas:

- the [improvement of services for victims of rape and sexual assault](#)
- mental health and distress
- [health and social care delivery in prisons](#)





Scotland becomes first country in UK to ban smacking of children

Member's bill removing defence of 'justifiable assault' passed overwhelmingly



▲ Parents in England and Northern Ireland are currently allowed to use 'reasonable chastisement', while similar legislation to Scotland was introduced in Wales in March. Photograph: Rebecca Naden/PA



NEWS

15th March

Tamasin Knight: A law that justifies assaulting children harms health

By Tamasin Knight

COMMENT



In Scotland all adults are protected in law from all physical violence but children are not

0 comment

AS a consultant in public health medicine at NHS Scotland with a remit for child health, I am completely committed to improving the health – both mental and physical – of young people.



MOST READ
1 MP ranking site adds SNP disclaimer after member subject



This article is more than 1 year old

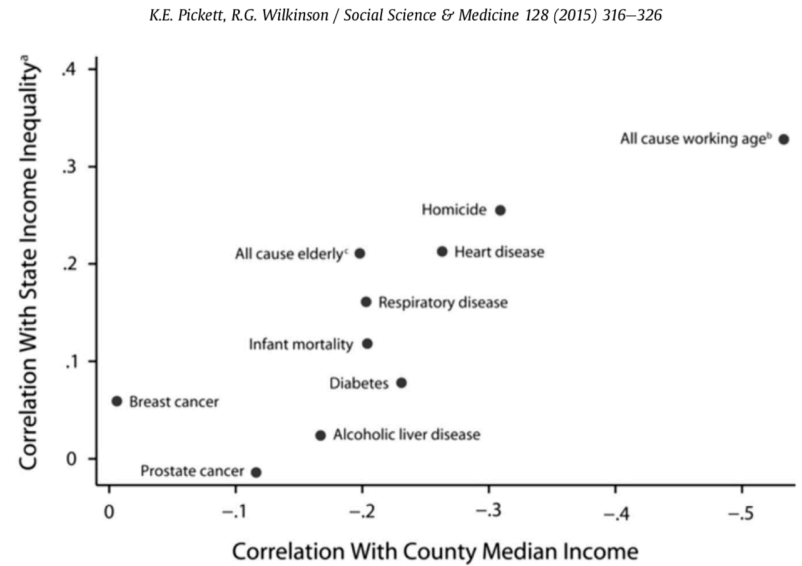
Rising crime is symptom of inequality, says senior Met chief

Patricia Gallan says inequality leads people to feel like they 'do not have a stake in society'



▲ Patricia Gallan is the assistant commissioner at the Metropolitan police. Photograph: Metropolitan police

Public Health Problems are multidisciplinary: why do we train for them separately? John Middleton, LEPH 2019



Why evidence based policy?

Things we do can do harm as well as good



Campbell Systematic Reviews

2004:2

First published: May 2002

Last updated: November 2003

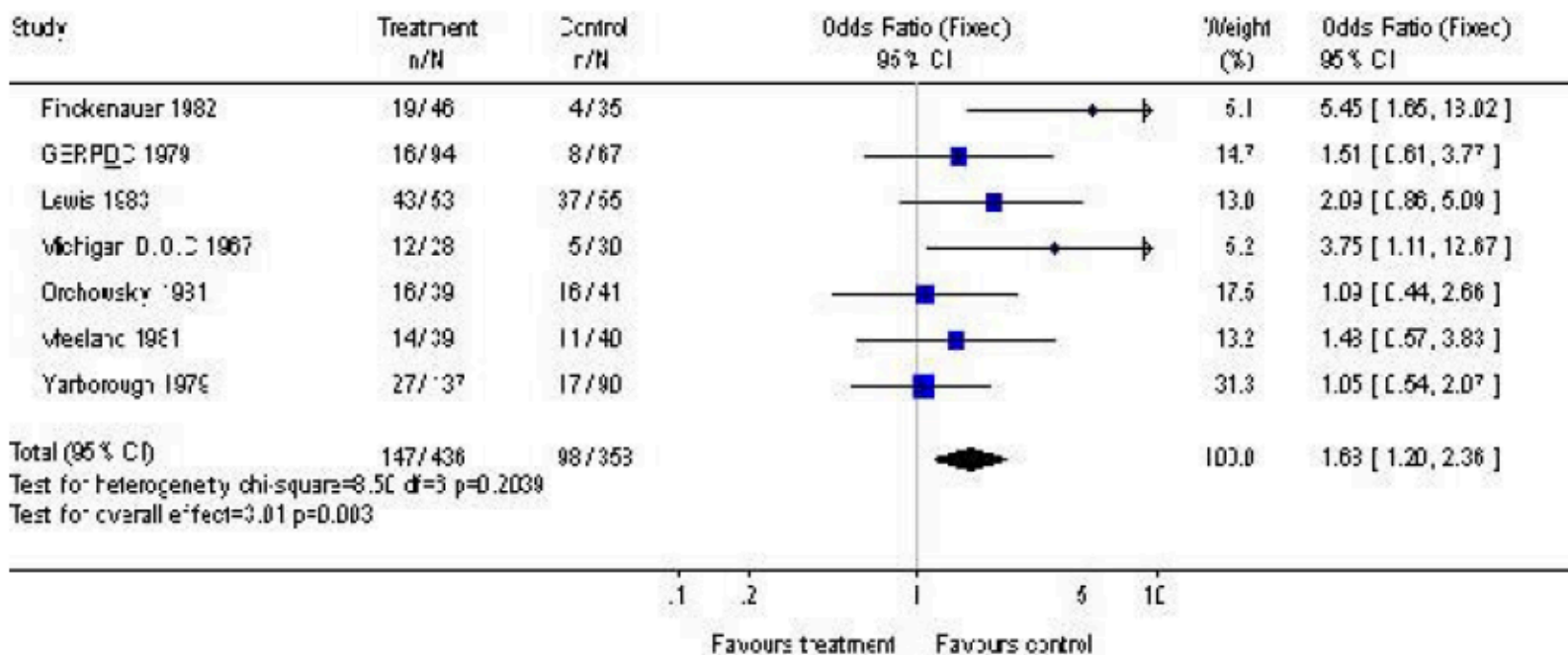
**“Scared Straight” and Other
Juvenile Awareness
Programs for Preventing
Juvenile Delinquency**

Anthony Petrosino, Carolyn Turpin Petrosino, John
Buehler

Review: "Scared Straight" and other juvenile awareness programs for preventing juvenile delinquency

Comparison: 01 Intervention versus Control, Crime Outcome

Outcome: 01 Post-intervention group recidivism rates - official measures only (fixed effects)



Pupils to 'do time' for a day

Porridge will be on the menu for 170 youngsters at a Cradley school when they take part in a crime awareness day.

Year ten pupils at Cradley High School will be experiencing a taste of life behind bars when prison staff and their guard dogs transform the school into a jail.

The project run by Prison, Me - No Way, a charity run by serving prison officers, aims to stop young people ending up in custody.

At the Homer Hill school on Friday prison officers will supervise pupils' movements.

Youngsters will meet at



Reorienting services

Preventing problems arising – economic, educational and environmental causes

Intelligent use of shared data

Applying best evidence of what works

Evaluating and monitoring what you've done

Working in partnership at all levels-strategic to operational

Seeing the community as an asset

Celebrating and respecting diversity

'Trauma informed and gender responsive'

Policing and Public Health

One call every five minutes relating directly to mental health (Metropolitan Police 2017)

9 in 10 police contacts complex welfare, safety & vulnerability (South Wales)





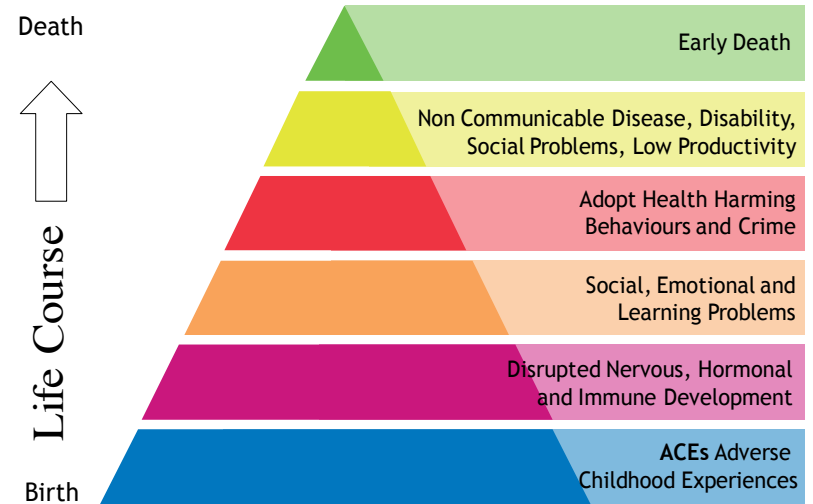
A public health approach to violence prevention

Crucial importance of early years, the first 1001 days and adverse childhood experiences

An evidence based approach – Good systematic reviews re early years interventions, parenting training, youth mentoring; good modelling of alcohol pricing, control of access and enforcement.

A life course approach- new concerns about adverse childhood experiences (ACEs) impacts on violent behaviours, poor communication and poor mental health in later life

A public mental health approach- linked to ACEs, the neurobiological hardwiring of young brains in the first 1001 days; Reinforcing positive mental attributes: self-confidence, self-esteem, self-expression and positive communication



Adverse Childhood Experiences (ACEs): impacts across the life course. adapted from Felitti et al, 1998



**Camau Cynnar
gyda'n Gilydd**
**Early Action
Together**

Rhaglen ACEau yr Heddlu a Phartneriaid
Police & Partners ACES Programme

Transitioning from Police Innovation to a National Programme of Transformation:

An overview of the upscaling of
Adverse Childhood Experience (ACE) and
trauma-informed training and evaluation



Public Health Problems are multidisciplinary:
why do we train for them separately? John
Middleton, LEPH 2019

Case study 1

Harm reduction and methadone maintenance



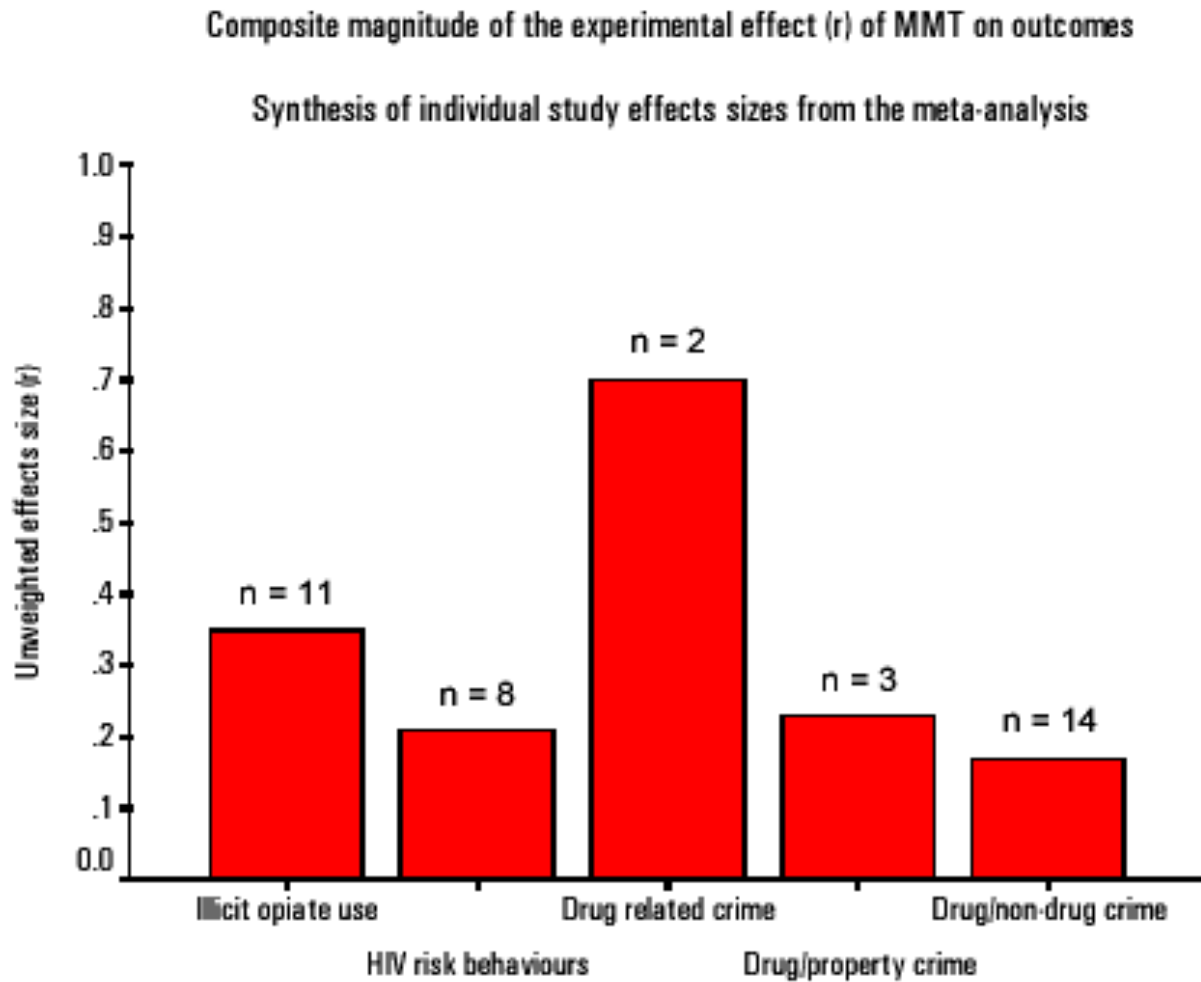
West Midlands Crime GRIP Project

Getting **R**esearch Into **P**ractice that Reduces Crime and Improves Health

Crime GRIP disseminates and encourages implementation of evidenced-based interventions that simultaneously reduce crime and improve health; the evidence being obtained from critically appraised systematic reviews. Systematic reviews attempt to combine the results of many individual trials of a given intervention

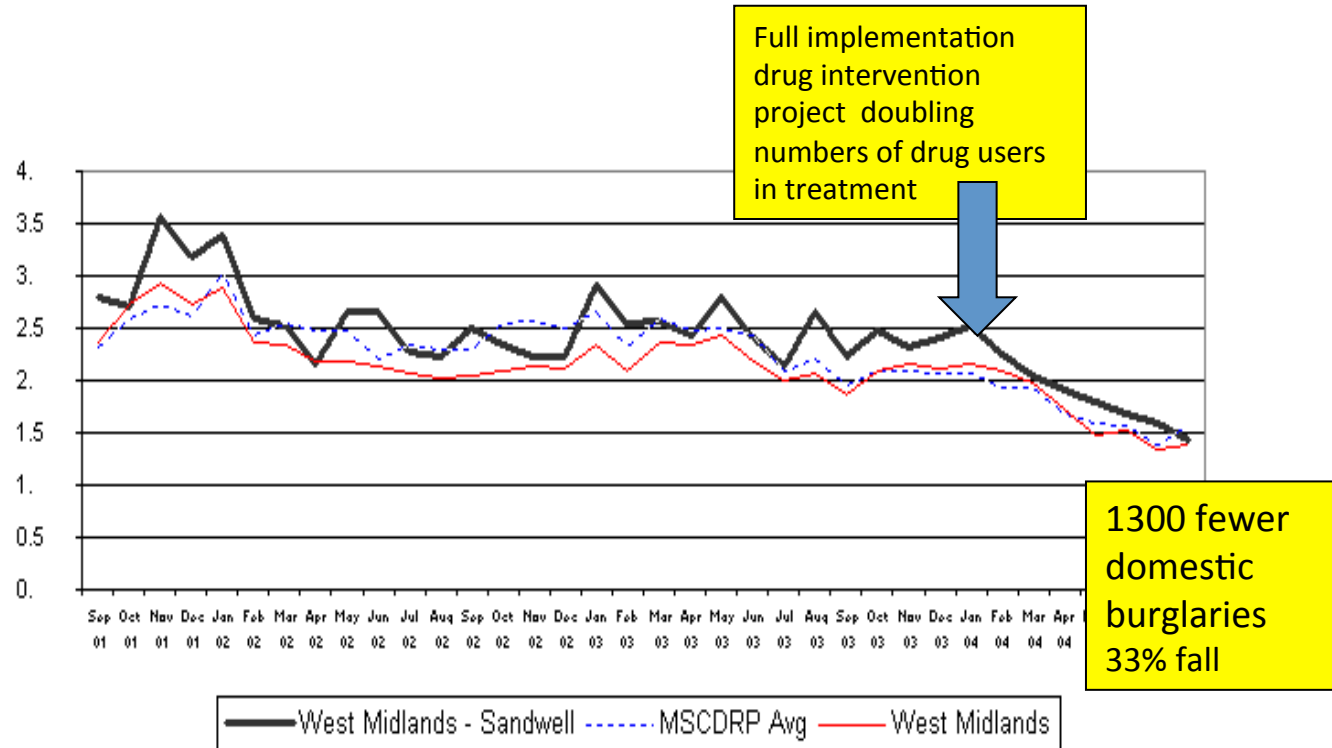
Methadone Maintenance Treatment Workshop¹ Flyer

Figure 1

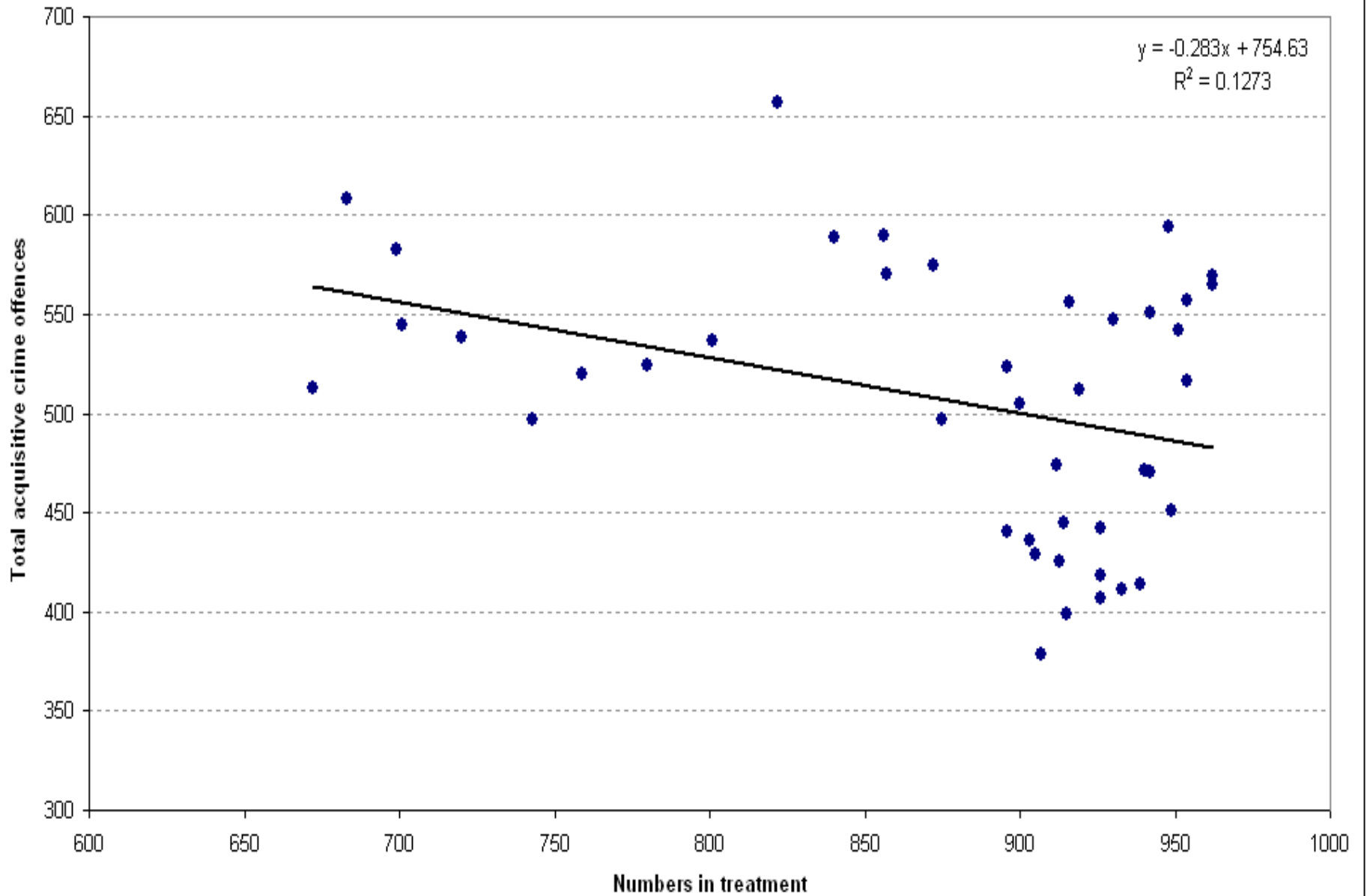


Marsch Addiction 1997

Domestic burglary Sandwell 2001-2005



Numbers in treatment and acquisitive crime Apr 2007 to Oct 2010 (corresponding month)



Effects of Drug Substitution Programs on Offending among Drug-Addicts

Nicole Egli, Miriam Pina, Pernille Skovbo Christensen, Marcelo Aebi, Martin Killias

BBC Sign In News Sport Weather iPlayer TV Rad

NEWS SCOTLAND

Home World UK England N. Ireland **Scotland** Wales Business Politics Health & Entertainment & Arts

Scotland Politics | Scotland Business | Edinburgh, Fife & East | Glasgow & West | Highlands & Islands | South | Tayside & Central

22 August 2013 Last updated at 11:01



Scottish methadone policy 'should continue', says review

COMMENTS (98)

Methadone should continue to be used to treat heroin addicts in Scotland, a review commissioned by the Scottish government has concluded.

The **Scottish Drugs Strategy Delivery Commission** also said the system used to reimburse pharmacists for dispensing methadone should be reviewed.

Methadone has been at the heart of drug treatment strategies since the 1980s.

But its use had been widely criticised by recovering addicts and drugs workers.

The independent commission was set up in the wake of concern over the role of methadone in drug-related deaths. Almost half of those who died had been using the heroin substitute.

Methadone is by far the most widely used of the opioid replacement therapies (ORT), with more than 20,000 patients receiving it last year, but some users take it for years without being weaned off it altogether.



Many addicts complain of being "parked" on heroin for years

Related Stories

Methadone policy to be reviewed

Methadone costs 'increase by 25%'

Why quitting methadone is 'vital'



BMJ 2016;354:i5259 doi: 10.1136/bmj.i5259 (Published 17 October 2016)

Page 1 of 2

EDITORIALS



Drug related deaths in England and Wales

A public health and primary care emergency

John Middleton *president*¹, Sara McGrail *independent health policy specialist*², Ken Stringer *independent consultant in substance misuse*²

¹Faculty of Public Health, London NW1 4LB, UK; ²Telford, Shropshire, UK

Figures from the Office for National Statistics published last month show that total drug related deaths in England and Wales increased by 65.7% and opioid related deaths by 107% between 2012 and 2015.¹ These figures exclude deaths from bloodborne viruses and other conditions related to use of illegal drugs, so the actual mortality associated with drug use will be higher. In a report published the same day, Public Health England² suggests contributors to the increase in deaths, including the rising age and increased physical frailty of drug users, interactions with other drugs and new psychotropics, and variations in the street purity and availability of opiates. Over half of the drug related deaths were among people who used opiates and had had no recent contact with drug services.

lower risk of death compared with those following abstinence regimens.¹⁰

The Health and Social Care Act 2012 transferred responsibility for public health to local authorities. Drug and alcohol treatment were no longer classed as NHS services and became subject to a lower level of clinical governance, commissioning practice, and integration with other health interventions. Earlier changes had curtailed both the commissioning and the strategic role of local partnerships, reducing their ability to work in a coordinated way to manage substance use.¹¹ The provider market and commissioning practices increased treatment provision by large corporate charities.¹² In the current aggressive procurement culture we risk losing much NHS and local expertise in this



WEST MIDLANDS POLICE

How can we help?

SIGN IN ▾

[Home](#) [News](#) West midlands police first force carry life saving drug treatr

West Midlands Police first force to carry life-saving drug treatment on the streets



Chief Inspector Jane Bailey with the life-saving drug

NEWS Top stories Your area Topics Sport Weather

ITV REPORT 29 May 2019 at 11:26am

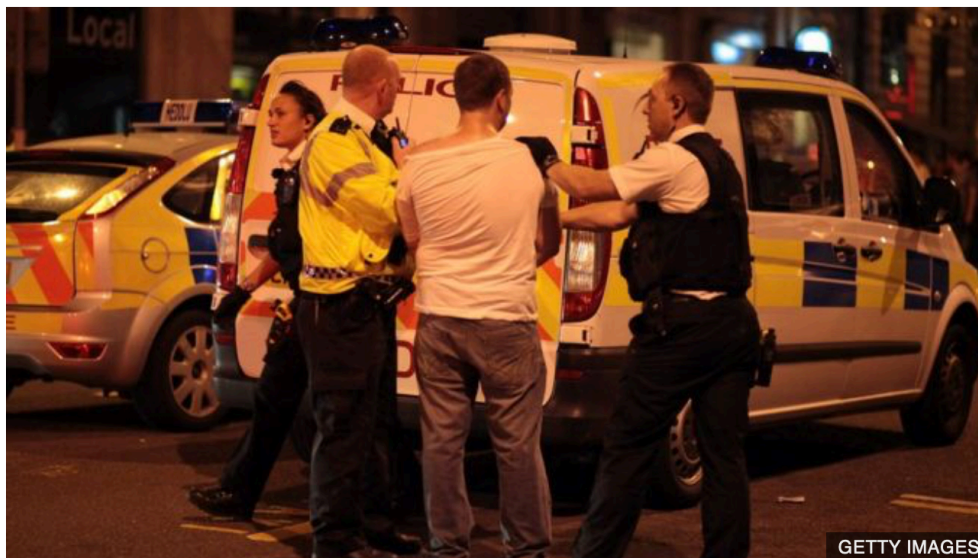
Durham Police receives pioneering training to administer life-saving drug to overdose detainees



LEPH
2019
21-23 OCTOBER



The screenshot shows the top portion of a BBC News website. At the top, there is a navigation bar with the BBC logo, a 'Sign in' button, and a notification bell. Below this are menu items for 'News', 'Sport', 'Weather', 'iPlayer', and 'Sounds'. A large red banner with the word 'NEWS' in white is prominent. Underneath the banner is a secondary navigation bar with links for 'Home', 'UK', 'World', 'Business', 'Politics', 'Tech', 'Science', 'Health', and 'Family & Education'. A third navigation bar shows regional links for 'Wales', 'Wales Politics', 'Wales Business', 'North West', 'North East', 'Mid', and 'South West'. The main headline reads 'The Cardiff Model: Plastic pint glasses to real-time CCTV'. Below the headline is the date '7 July 2017' and a row of social media sharing icons for Facebook, Messenger, Twitter, Email, and a general 'Share' button.



The introduction of plastic glasses in pubs and clubs was a hot topic of debate when first mooted about 15 years ago.

Sandwell last drink survey 2013

72% of assaults have a specific geographical reference (70% is the benchmark set by College of Emergency Medicine)			
Top venues by venue name	Pig and Trumpet (Wednesbury)	15	0.5%
	Turks Head (Wednesbury)	11	0.4%
	Lounge (Tipton)	10	0.4%
	Royal Oak (Dudley Port)	9	0.3%
	Ashbury Tavern (Great Barr)	8	0.3%
	Busbys (West Bromwich)	7	0.2%
	Explosions (West Bromwich)	7	0.2%
	Desi Masala (West Bromwich)	7	0.2%
	Hargate Inn (West Bromwich)	6	0.2%
	Stone Cross Inn (West Bromwich)	6	0.2%
	Woden Inn (Wednesbury)	6	0.2%
Top streets (where assault took place)	High Street (West Bromwich)	101	3.6%
	Broad Street (Birmingham)	45	1.6%
	Market Place (Wednesbury)	27	1.0%
	Newton Road (Sandwell Valley/Great Barr)	21	0.7%
	Walsall Road (Stone Cross)	18	0.6%
	Beacon View Road (Charlemont Farm)	16	0.6%
	All Saints Way (Sandwell Valley)	16	0.6%
	Hydes Road (Hateley Heath)	14	0.5%
	Hallam Street (Sandwell Valley)	13	0.5%
	Holyhead Road (Sandwell Valley/Handsworth)	12	0.4%
	Wolverhampton Road (Oldbury)	11	0.4%

Home



Latest News

[Sandwell Scout District](#)

[Telephone scam targeting older people](#)

[VOLUNTEER with the Community Offer Good Neighbour](#)

[The Community Offer: West Bromwich Central, Lyng a](#)

[Be Well](#)



This service has been developed by organisations from within the public and voluntary sectors. This will provide an integrated and inclusive service, to identified potentially "at risk" households combining risk assessment, advice and immediate intervention by providing information or through the referral process to an appropriate organisation for further action.

Sandwell Hub Partner Services

Safety

- Police Reassurance visit
- Home Fire Safety Check
- Falls safety check
- Community alarms
- Domestic abuse

Wellbeing Services

- Health and Social care assessment
- Befriending scheme
- Relaxation Therapy
- Weight management
- NHS Health Check
- Employability and Training
- Stop Smoking Service
- Alcohol misuse
- Drug misuse

Housing Services

- Handy Persons Scheme
- Private sector housing advice
- Minor / Major Adaptations
- Damp and Mould – private rented
- Trading Standards

Additional Help

- Free benefits check
- Financial efficiency / heating advice
- Careers energy card scheme
- Warden service / community alarms
- Lifestyle choices



Making referrals to multiple agencies
through Sandwell Hub

**Joint Protocols for
Children and Family Services
and Substance Misuse Services**

**Practice Guidance:
Safeguarding Children
affected by Parent/carers
Substance Misuse**

October 2012

West Midlands LEPH examples

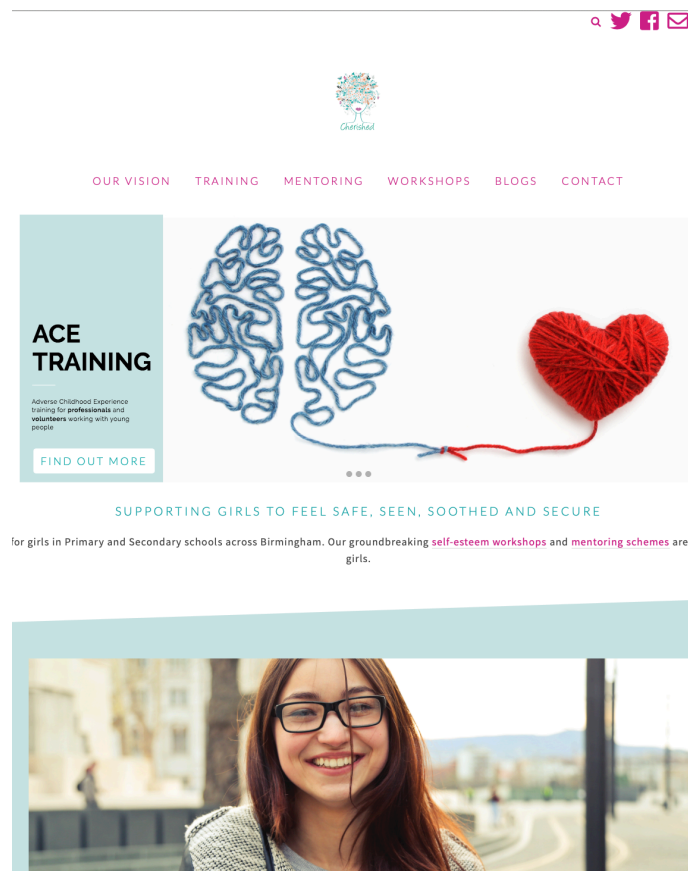
A public health foundation course specifically for police colleagues last year

Hidden sentences - study of effects of parental incarceration on children

Extensive modern slavery and human trafficking partnerships training

Violence Reduction Unit formed October 2019

ACEs training using CHERIsh-Ed CIC



The screenshot shows the website for ACE Training. At the top right, there are social media icons for search, Twitter, Facebook, and email. Below these is the CHERIsh logo, which features a stylized brain with a heart inside. A navigation menu includes links for OUR VISION, TRAINING, MENTORING, WORKSHOPS, BLOGS, and CONTACT. The main content area has a light blue background on the left with the text 'ACE TRAINING' and a sub-headline: 'Adverse Childhood Experience training for professionals and volunteers working with young people'. Below this is a 'FIND OUT MORE' button. To the right is a large image of a brain with a red heart made of string, connected by a string. Below the image is the text 'SUPPORTING GIRLS TO FEEL SAFE, SEEN, SOOTHED AND SECURE' and a paragraph: 'for girls in Primary and Secondary schools across Birmingham. Our groundbreaking self-esteem workshops and mentoring schemes are girls.'



HOME SERVICE COMMUNITY LEARNING ▾ STORIES ▾ NEWS PUBLICATIONS CONTACT

DEAN SPRUCE / 10 JUN 2019 / 0 / EVENTS, MENTAL HEALTH, STAFFORDSHIRE POLICE, TRAINING / WEB LOG

Staffordshire Police: Mental Health Training Events

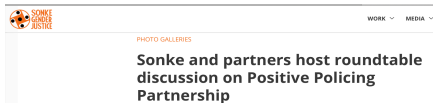
Share on Facebook

Tweet on Twitter

Share on Google+



By **Diane Malkin**, Vulnerability Manager, Thematic Lead for Vulnerability and Mental Health, Staffordshire Police

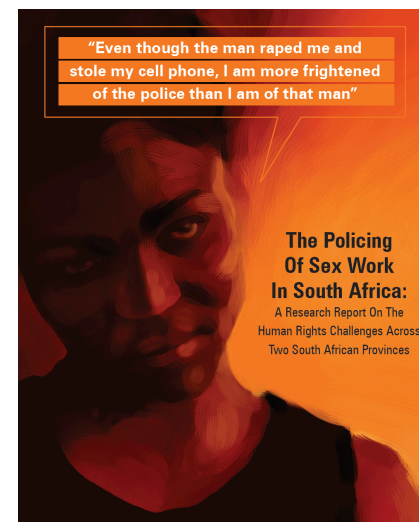


University of Pretoria Advanced Human Rights Course Sex work is still a pretty sensitive topic in South Africa and police really try to keep sex work related activities under the radar.

Positive Policing Partnership Cape Town, South Africa

SWEAT (Sex Workers Education & Advocacy Taskforce) and the Sisonke Sex Worker movement reps police training based on the COC Dignity & Diversity Training programme - they do the sex worker sensitisation sessions.

<https://genderjustice.org.za/photo-gallery/sonke-and-partners-host-roundtable-discussion-on-positive-policing-partnership/>



www.genderjustice.org.za
www.sweet.org.za



**Donna Evans
presenting at
LEPH2019
PHD
workshop**





DOSSIERS



ADDICTION



ALCOOL



CADRE INTERNATIONAL



CANNABIS



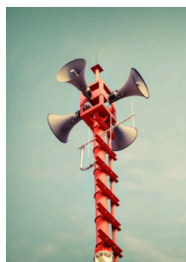
CHAMP PROFESSIONNEL



CONSOMMATION
CONTRÔLÉE



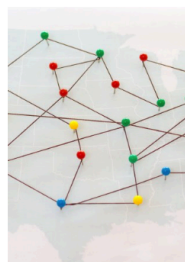
DROITS HUMAINS



ESPACE PUBLIC



GENRE ET SEXUALITÉ



HYPERCONNECTIVITÉ



INTERVENTION PRÉCOCÉ
(IP)



JEUNES



JEUX



LOI SUR LES STUPÉFIANTS
(LSTUP)



MÉDECINE DES
ADDICTIONS

PUBLICATIONS DU GRETA



COLLABORATION ENTRE POLICE, MILIEUX ÉDUCATIFS ET ADDICTIONS

20.09.2017 (INTERVENTION PRÉCOCÉ) (PRÉVENTION)

Le GRETA publie ses recommandations en faveur d'une meilleure collaboration interprofessionnelle. L'intérêt de ce travail.

RISA - Réseau Interdisciplinaire des Sciences de l'Addiction
Le projet RISA (Réseau Interdisciplinaire des Sciences de l'Addiction) rassemble chercheurs, enseignants et étudiants pour favoriser l'expression et la recherche sur le sujet.



PROJETS ET MANDATS

Le GRETA met en oeuvre des activités sur mandat de ses plateformes, de son comité ou de partenaires externes.

Sondage sur le système international de contrôle des drogues
L'OFSP a mandaté le GRETA pour sonder le système de régulation internationale des drogues. Il abordera les futurs scénarios possibles pour le contrôle des substances.

Additions en milieu carcéral
La question des addictions en milieu carcéral relève d'un phénomène complexe. Pour mieux cerner la situation romande la Fondation latine « Projet pilotes - Additions » (FLZPA) a mandaté le GRETA. Son travail a donné lieu à un rapport en 2017 et plusieurs recommandations de travail.

Plateforme sur la santé, les droits humains et les substances psychoactives
La Plateforme Genevoise sur les Droits Humains, la Santé et les Substances Psychoactives rassemble les acteurs de la société civile travaillant dans le domaine de la santé, des droits humains et des politiques drogues. Le GRETA et l'Institut de Santé Globale de l'Université de Genève sont les porteurs de cette nouvelle plateforme qui comprend plusieurs membres fondateurs.

Recherche sur les jeux de hasard et d'argent en ligne (H-LAL)
Dans la perspective de l'ouverture du marché des jeux en ligne prévue au 1er janvier 2019, le PLDI a mandaté courant 2018 le GRETA et Addiction Suisse pour qu'ils effectuent un état des lieux de la situation avant (phase 1) et après (phase 2) l'introduction de ces nouvelles modalités de jeu.

Collaboration Handicap et Addictions (CHA)
Le GRETA mène un projet de Collaboration entre le domaine du Handicap et des Addictions (CHA) en vue de mieux répondre aux consommations problématiques chez les personnes en situation de Handicap. Ce projet est réalisé avec le soutien de promotion santé suisse et de l'OFSP.

CRADI
La Coordination Romande des Institutions et organisations œuvrant dans le domaine des Addictions (CRADI), œuvre dans le domaine de la politique du subventionnement et coordonne la fourniture de prestations ambulatoires au niveau romand. En outre, elle a la mission de favoriser l'échange et la collaboration entre les institutions romandes dans le cadre de la promotion de leurs activités et de la défense de leurs intérêts communs. Depuis 2017, le GRETA assume le mandat de coordination de la CRADI.

Newsletter "Dans les cantons"
Comme ce fut le cas avec feu le PNA (Plan cantonal alcool), l'OFSP entend soutenir l'implémentation et le développement des Stratégies Addictions et Prévention des maladies non transmissibles par le biais d'une newsletter et d'un monitoring. C'est le GRETA qui est chargé de ce mandat pour la Suisse romande avec le soutien primordial des cantons.

Rencontres intercantionales latines
Les Rencontres intercantionales latines (RILA) sont des rencontres d'échange annuelles à visée opérationnelle qui s'adressent aux cantons et aux ONG latines actives dans la prévention des addictions et des maladies non transmissibles. Avec l'entrée en vigueur en 2018 des Stratégies Addictions et MNT, l'OFSP a entrepris de remanier les différentes plateformes d'échange spécifiques (alcool, tabac, drogues, etc.) dans une perspective globale de promotion de la santé et de prévention des addictions.

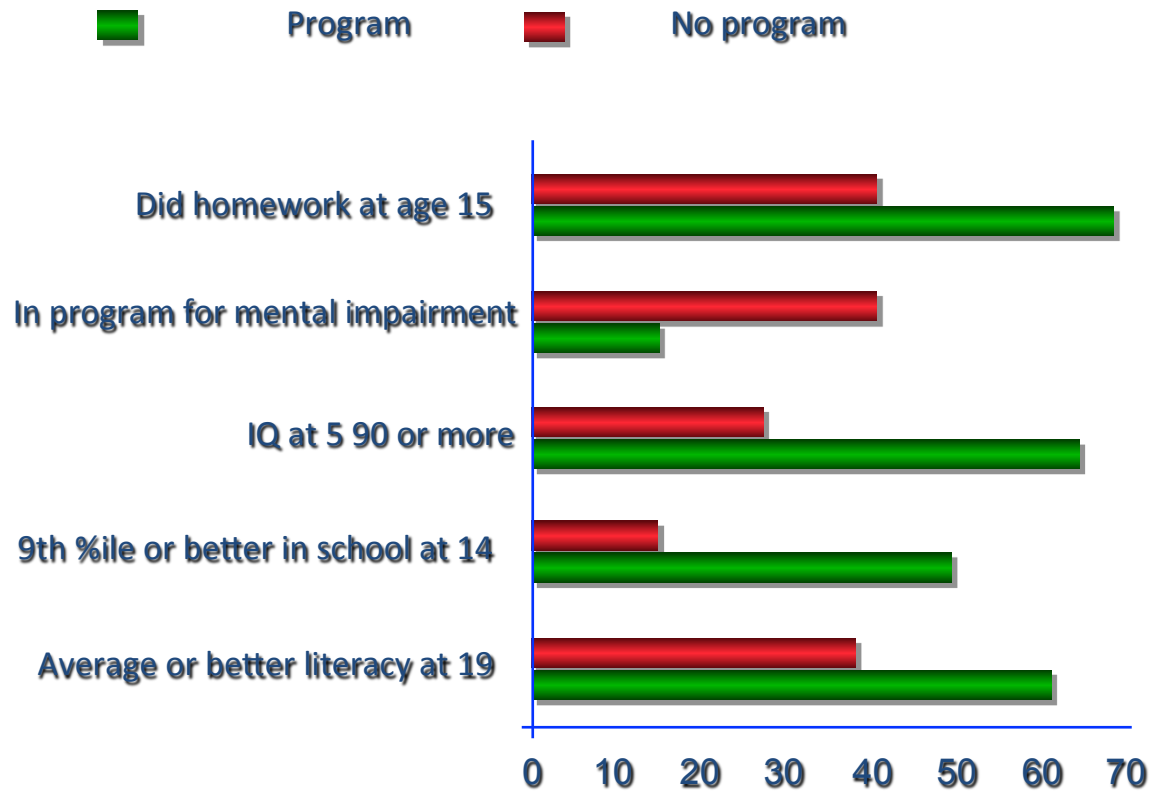




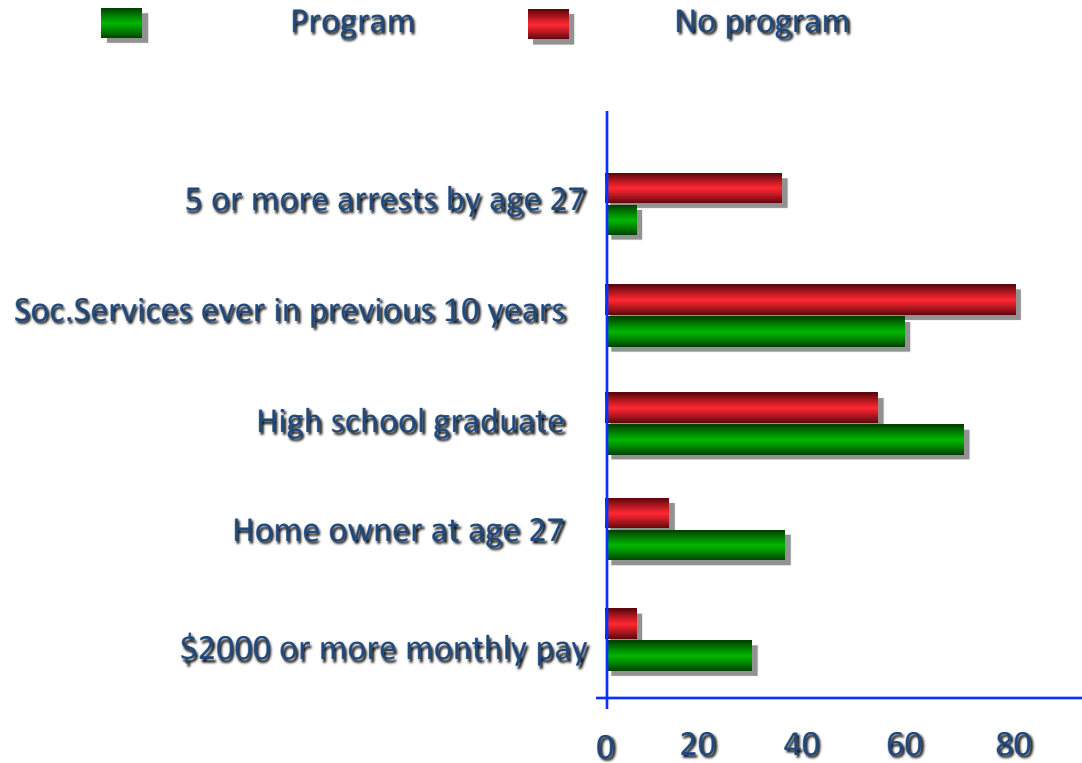
Public Health Problems are multidisciplinary:
why do we train for them separately? John
Middleton, LEPH 2019

Case study 2 Pre-school interventions

Perry /Highscope Pre-school study



Data from the High/Scope Perry preschool project. Bars represent percentage in each of the two groups. The difference in major educational performance findings between program and non-program children is significant.



Further data from the High/Scope Perry preschool project. Benefits from the program continue to be seen in adulthood. Bars represent percentages of each of the groups. The difference between program and non-program children is significant.

Public Health Problems are multidisciplinary:
why do we train for them separately? John
Middleton, LEPH 2019

In education, Highscope:

**‘If it was a drug, it would be
unethical not to use it’**

NurseryWorld

HOME NEWS OPINION PRACTICE ACTIVITIES MANAGEMENT CAREERS & TRAINING



High/Scope: Time to choose

Ruth Thomson

Tuesday, January 29, 2012



A child-led approach based on learning through play is reaping great rewards, as Ruth Thomson reports



A child-led approach based on learning through play is reaping great rewards, as Ruth Thomson reports

Sandwell has high unemployment (well above the national average), high levels of deprivation (over half of families qualify for housing benefit) and high rates of teenage pregnancy (one of the top three in the country), but it is hoped that the introduction of High/Scope into early years and primary settings will help improve the life chances of its young generation.

High/Scope is an approach to early years education that has at its core the belief that children gain confidence, initiative and a lifelong love of learning when involved in well-supported activities of their own choosing (see box). Such benefits, it is claimed, are carried into adult life, producing a generation with positive attitudes to education and society.

Iris Birks, early years consultant with Sandwell Local Education Authority, had run courses on the approach, but its adoption by local practitioners gained momentum when director of public health Dr John Middleton also became convinced of its benefits and secured 150,000 of Health Action Zone funding for High/Scope training.

He was impressed with findings of the Perry Pre-School Project in the US, which tracked 123 people over 30 years and found that those educated under the High/Scope method had been more likely to graduate from school, enrol in further education classes and find employment. They had also been less likely to commit crimes, be assigned to special needs classes and become teenage parents. And there were benefits for the public purse,

with each \$1 spent on High/Scope saving \$7 on remedial services in the long term. 'If we want a thriving, vibrant community in 20 years' time, then to make it happen we need to start working with young children now,' says Dr Middleton. 'The social and educational benefits of High/Scope are considerable. If it were a drug, we'd have to prescribe it. It would be unethical not to.'

So far more than 120 teachers, nursery nurses, health visitors, childcare workers, school heads and managers have attended introductory and awareness-raising sessions. A further 28 early years practitioners have completed Curriculum Implementation Courses, with eight of those becoming High/Scope endorsed trainers, qualified to cascade the training within schools and other early years settings.

Search all BMJ research articles From 1840 Jan

Keep up to date with cardiology: Access the latest [cardiovascular medicine resources](#) from across BMJ Group

RESEARCH

Teenage pregnancy and social disadvantage: systematic review integrating controlled trials and qualitative studies

BMJ 2009; 339 doi: 10.1136/bmj.b4254 (Published 12 November 2009)

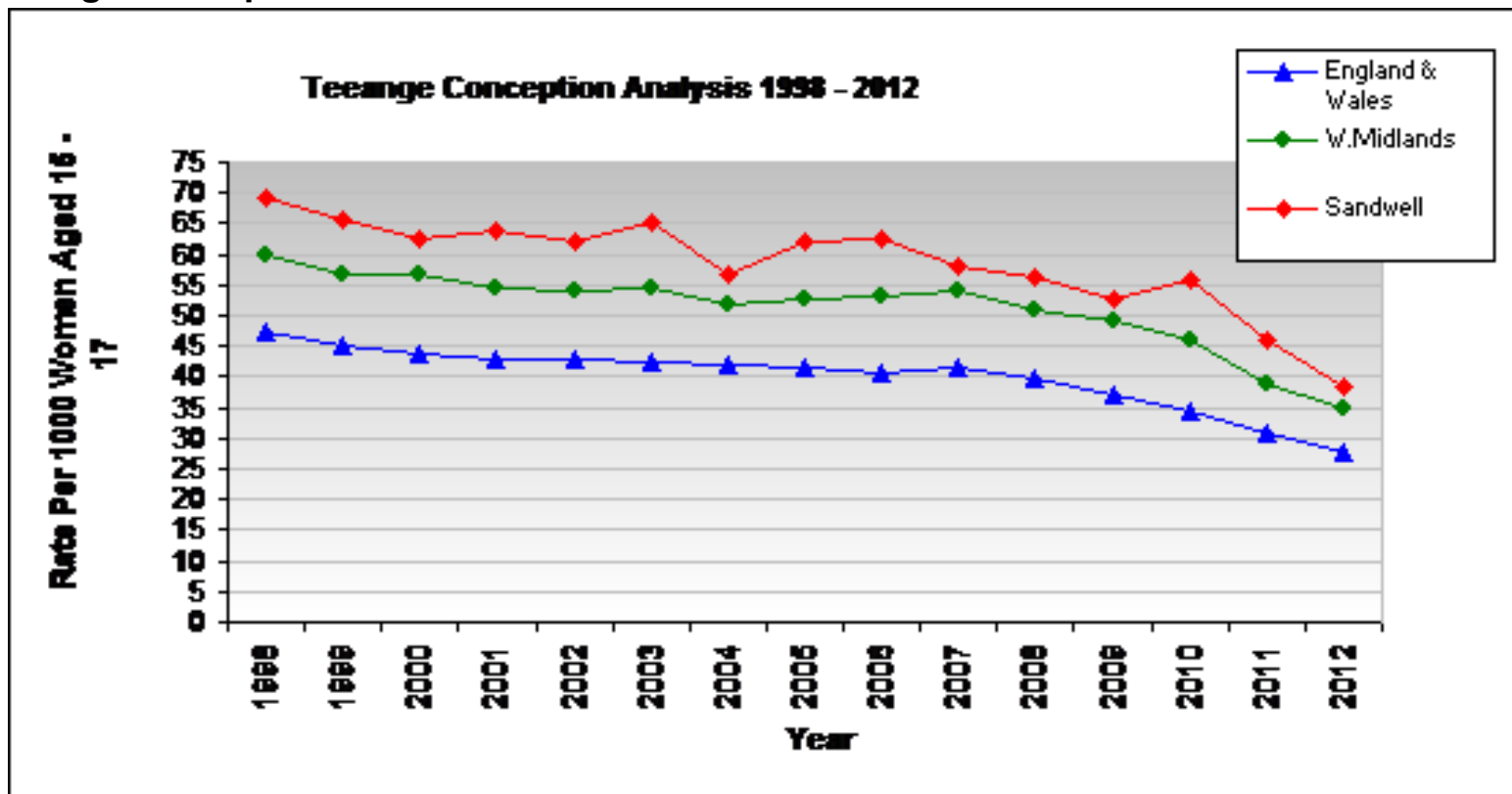
Cite this as: BMJ 2009;339:b4254

- Adolescent health
- Child health
- Clinical trials (epidemiology)
- Epidemiology
- Obstetrics and gynaecology
- Paediatrics
-

Article | Related content | Article metrics

Angela Harden, professor of community and family health¹, Ginny Brunton, research officer², Adam Fletcher, lecturer in young people's health³, Ann Oakley, professor of sociology and social policy²

Teenage Conception 1998-2012



Sandwell's reduction since baseline (44%) is higher than England & Wales's reduction of 40.8%. The West Midlands reduction has also been lower than Sandwell at 42%. Figure 1, above, show that the gap between Sandwell and England is reducing further.



Asset based public health

Community assets




Ideal for All

Ideal for All (IFA) is a not for profit company and registered charity run by and for disabled people in the borough (district) of Sandwell. It provides a range of social and health care services to support disabled people, carers and disadvantaged groups, to learn new skills and live as independently as possible. Ideal For All to




Asset based public health
Community assets: Sandwell
Community health network, Youth
Cabinet, Ideal for All Independent
Living Centre, Options for life,
Agewell,

OPTIONS FOR LIFE

Enabling Supporting Achieving






SOUTH AFRICAN
POLICE SERVICES
&
COC NETHERLANDS

48



Lessons Learned

The South African Police Service's Dignity, Diversity
And Policing Project: The Promotion And Protection
Of Human Rights, Dignity And Safety For All.

Asset based public health

Experts through experience



BMJ 2019;364:l1022 doi: 10.1136/bmj.l1022 (Published 8 March 2019)

Page 1 of 2



EDITORIALS

Healthcare for people experiencing homelessness

A public health crisis caused by political choices

Alex Bax *chief executive*¹, John Middleton *president*²

¹Pathway, London, UK; ²Faculty of Public Health, London, UK

The recent BMA report *Streets of Shame* highlights the growing crisis in healthcare provision for homeless people and indicates that the UK's rise in homelessness is now a public health disaster.¹ According to the report, the average age of death among homeless people is 47 for a man and 43 for a woman; 507 people died while they were homeless in 2017, the highest

occupational therapists, physiotherapists, psychologists, dentists, podiatrists, and optometrists.

The Pathway model for homeless healthcare (www.pathway.org.uk) is becoming more established in the UK. Rooted in primary care, teams with expertise in homelessness reach into

Community assets

Sheffield Fortify: Community members involved, sometimes ex gang members

Northamptonshire Violence Reduction Unit also involves Former gang members

Queensland Australia Pins in strawberries major emergencies - community pick your own action

Napier University research strategy involving experts by experience

Gloucestershire ABCD 'problem solve with strength-based methodology'



LEPH
2019
21-23 OCTOBER



Case study 3

Healthy safer town planning



Programmes

LGA programmes

Children and young
people

Community safety

Culture, tourism and
sport

Economy and transport

Environment, planning
and housing

European and
international

Finance

[Home](#) / [Programmes](#) / [Health, wellbeing and adult social care](#) / [Health](#)

Sandwell - Sandwell Healthy Urban Development Unit

Summary

Sandwell Council and Sandwell Primary Care Trust (PCT) have created the Sandwell Healthy Urban Development Unit (SHUDU). This is a forum for officers and members to coordinate and integrate spatial planning and efforts to reduce health inequalities.

Background

A range of health indicators shows Sandwell fares worse - and sometimes much worse - than the English average. These include as deprivation, child obesity and early deaths from heart disease. This poor health profile was the catalyst for Sandwell Council and Sandwell PCT to submit a joint bid for Healthy Town funding for a Sandwell Healthy Urban Development Unit (SHUDU) in 2008.

While the bid narrowly failed, the application process built up a momentum for joint working between spatial and transport planners at the council and public health staff at the PCT.

[http://www.local.gov.uk/web/guest/health/-/journal_content/
56/10171/3511175/ARTICLE-TEMPLATE](http://www.local.gov.uk/web/guest/health/-/journal_content/56/10171/3511175/ARTICLE-TEMPLATE)

UTOPIA ON TRIAL

VISION AND
REALITY IN
PLANNED
HOUSING



A L I C E C O L E M A N







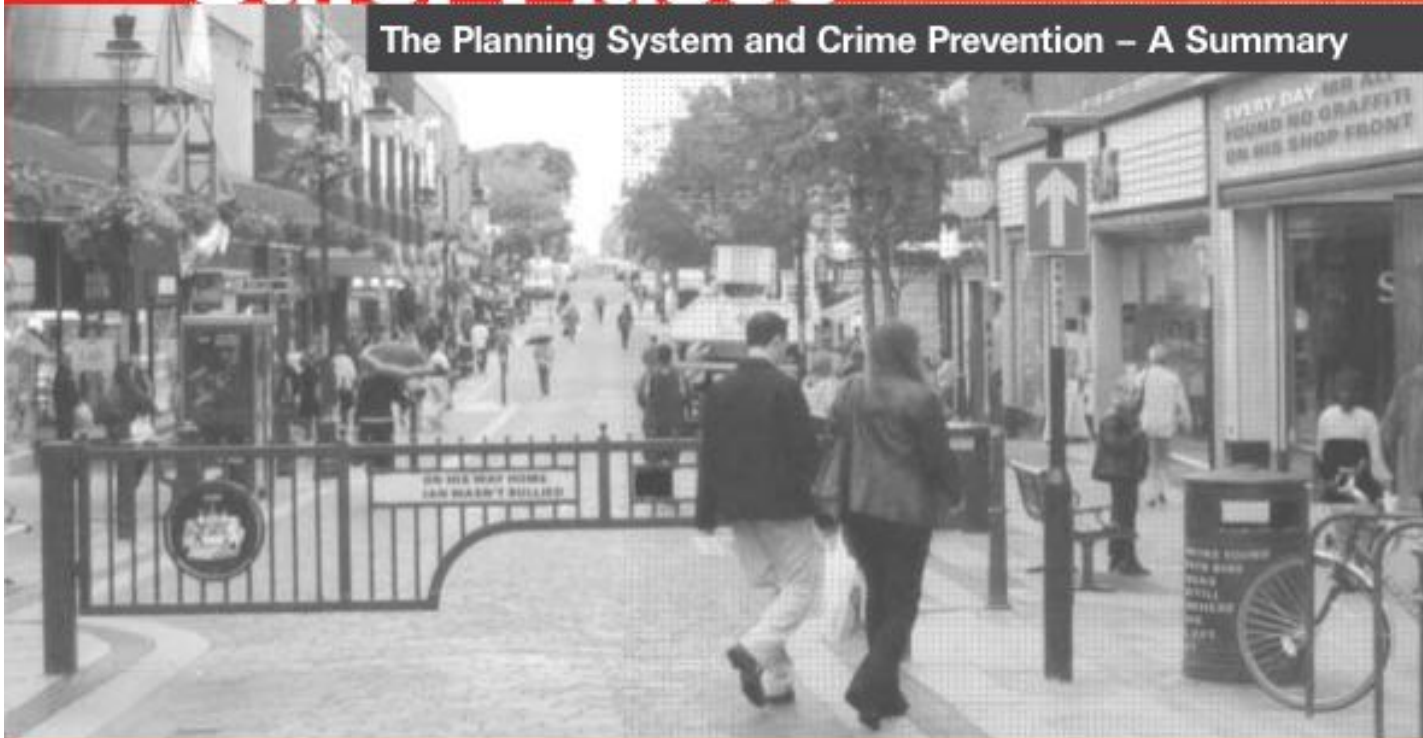
Office of the
Deputy Prime Minister
Creating sustainable communities



Home Office
BUILDING A SAFE, JUST
AND TOLERANT SOCIETY

Safer Places

The Planning System and Crime Prevention – A Summary





*Supplementary
Planning Guidance
on*
**Community
Safety**





Coming soon to a sidestreet near you... the 20mph speed camera

Road safety groups welcome moves to cut deaths caused by speeding

speed cameras do save lives,' said Peter Hendy, managing director of surface transport at Mayor Ken Livingstone's agency, Transport for London (TfL). 'I

traffic - especially motorcyclists - decline in seat belt wearing and divers using mobile phones. And criticism has been that cameras are

20mph limit proposed for new estates

By Jane Clew

ALL new housing estates built in Sandwell could be made 20mph zones in a bid to slash the number of road accidents in the borough.

The plans were revealed after Bellway Homes Limited asked Sandwell Council to impose 20mph speed limits on two of their new housing developments.

The requests cover the Darbys Hill Quarry estate in Tivdale and the Penny Hill Lane estate in West Bromwich and will see the speed restrictions slapped on as part of existing traffic calming features installed when both developments were at the planning stage.

The overall cost of the scheme is £3,000 which will be stumped up by Bellway.

But at a meeting of Sandwell Council's Community and Neighbourhood Services and Safety committee, traffic and road safety manager Keith Sansom revealed plans to make every newly built

housing estate in the borough the subject of a 20mph order.

He said research showed 20 mph speed restrictions in residential areas, combined with traffic calming measures, significantly reduced the number of serious accidents.

"A good process would be that all new residential estates could be 20 mph zones," Mr Sansom said.

Cost

"When traffic calming is included in a 20 mph zone it really does work.

"What we require developers to do now is incorporate 20 mph zones into their plans for new estates."

He added that the cost of implementing the speed restrictions would be met by the developers as part of the planning permission instead of the council.

Darbys Hill Quarry is made up of Mallen Drive, Brookes Close, Taylor Way and Huskinson Close, as well as Wakeman Drive, Spencer Close, Trafalgar Road, Ludgate Close and Hodges Drive.

Pennyhill Lane is a small residential development consisting of David Harman Drive, Harrington Close and Hodder Grove.



CLIMATE CHAOS

WWF is calling on the power sector to cut carbon dioxide emissions. Drastically. It's both essential and achievable, says **Kirsty Clough**.

Climate change is happening now, and we're living with its effects every day. When summer floods struck the picturesque village of Boscastle, cars and trees were washed away and buildings devastated. Over 150 people had to be airlifted to safety. Is this a glimpse into a future where extreme and devastating weather events will be even more common, and our climate plunged into chaos? Yes, if we continue to pump CO₂ into our atmosphere at present rates.

Tony Blair's recent acknowledgement of the urgency of climate change and his declarations about taking on the challenge are encouraging. But policies on paper and words delivered amid media frenzy aren't enough. Last year the UK's carbon dioxide emissions were actually on the rise. If we are to achieve our national goals to cut carbon dioxide by 20% by 2010, and 60% by 2050, we need to take urgent action.

Cars and industry are often assumed to be the main greenhouse gas culprits, but the truth remains that the power sector produces about a third of the UK's (and the world's) carbon dioxide emissions. That's why they're at the heart of WWF's

new global climate change campaign. *PowerSwitch* challenges this sector to become carbon dioxide-free by 2050 in developed countries, and to switch from coal to clean in developing countries.

It's not as hard as it sounds. A report

Ex-King Coal...

- still produces 40% of global electricity
- is the single largest source of global CO₂ emissions
- produces over half of the CO₂ from the power sector
- produces 70% more CO₂ emissions per energy unit than natural gas
- causes air and water pollution and mercury increases

written for WWF, *The Power To Save Our Climate*, shows how the power sector could easily cut its emissions by 60% (from 1990 levels) by 2020. Moreover, these cuts could save the industry £1.9 billion by 2010 and £4 billion in new investment by 2020. There's no need for radical policy shifts, and nuclear power doesn't even come into the equation. The technology already exists to make clean

power – by wind, biomass, combined heat and power and so on. All that's required is an extension of existing policies and their effective implementation. We need to remove the barriers that prevent the take-up of cost-effective energy efficiency measures; and set stronger targets for managing energy demand, emissions trading and, most of all, renewable energy. Only then can we ensure that our energy supply is truly sustainable – and not critically dependent on supplies from as far away as Russia or from politically unstable countries in the Middle East.

As winter beds down and the UK turns up the heating, the government must take a tough stand and stop bowing to pressure from the power sector. Quite simply, climate change must be stopped dead in its tracks – because if it isn't, floods like those that traumatised Boscastle will no longer be the exception, but the rule. ♻️

Kirsty Clough is WWF's PowerSwitch climate campaign officer.

WWF, 01483 426444, www.wwf.org.uk

The Power To Save Our Climate, a report for WWF-UK by Ilex Energy Consulting, is available to download at www.wwf.org.uk/thepowertosaveourclimate



A role for our climate
change special
interest group



This article is more than 1 month old

BP headquarters in London blockaded by Greenpeace

Environmental activists accuse oil company of 'fuelling' climate emergency



Greenpeace activists blockade BP headquarters with huge containers - video

Greenpeace activists have blockaded all entrances to the BP headquarters in London, demanding an end to all new oil and gas exploration.



Wildfires
Wildfires Force 10,000 to Flee as Alberta Repeals Carbon Tax
 By Olivia Rosane | May 31, 2019 06:53AM EST

Climate change policing: protests and disasters



Fracking is affecting our health, neighbours of shale gas site tell UK experts

by Ruth Hayhurst



Professor John Middleton, (centre) president of the Faculty of Public Health, with campaigners outside Cuadrilla's shale gas site at Preston New Road, 19 November 2018. Photo: DrillOrDrop

‘Where there is no vision the people perish’

William Beveridge designed a welfare state for the UK in the deepest point of the Second World War.

‘We should regard want, idleness , ignorance, squalor and disease as enemies of us all. That is the meaning of a social conscience; that we refuse to make our separate peace with evil.’



Celebrating diversity and equality



Dineke Zeegers, EUPHA
Chief Executive



Natasha Azzopardi Muscat,
EUPHA President

Police services responsive to the needs of women

Empowered women bring real change to police and to communities they serve

More women needed in decision making

More police women role models

Pace of change by advocacy and support

Trust and confidence in police when women visible in police

‘Men of quality are not afraid of gender equality, and institutions of quality are not afraid of gender equality’



The Future

Looking at what the future could look like, in terms of how we work, live, learn and travel

Thinking globally, acting nationally- The Welsh Wellbeing of Future Generations Act, 2015

‘Protecting resources from one generation to the next’



[About](#) [The Future](#) [Making it Happen](#) [Get Inspired](#) [Get Involved](#)

Future Generations Commissioner for Wales

Acting **today** for a better **tomorrow**

“**Never doubt** that a small group of thoughtful, committed, citizens can **change the world.** Indeed, it is **the only thing that ever has.**”

Margaret Mead



Goalcast

Thank you

Professor John Middleton, President, the Association
of Schools of Public Health in the European Region

John.middleton@aspher.org

Acknowledgements , declaration of interests

- John Middleton has been supported in this work by grants from the West Midlands Branch of the Home Office 2001-2005; the National Institute of Health Research through the Collaboration for Leadership in Applied Health Research and Care (CLARHC) 2008-2014, and through the funding and support of Sandwell Primary Care Trust, Sandwell Metropolitan Borough Council and West Midlands Police in Safer Sandwell Partnership.
- He has been generously supported in attending and speaking at the LEPH conference by the European Public Health Association and the Association of Schools of Public Health in the European Region.
- Thanks to Prof Richard Lilford, Sir Iain Chalmers, Gavin Butler formerly WM Home Office and all those involved in Crimegrip, CLARHC and the Safer Sandwell Partnership, Prof Jonathon Shepherd, Cardiff violence reduction partnership, Professor Mark Bellis, Bangor University and Public Health Wales, Alex Bax, Pathway Homelessness services and Faculty of Homelessness and Inclusion, Thanks also to Chief Inspector Jane Bailey, West Midlands Police, Karen Saunders, West Midlands Public Health England Centre, Linda Hindle, Helen Christmas, Public Health England, Alison McCallum, Lothian Health board, Lesley Graham NHS Scotland, Nick Crofts, GLEPHA, Donna Evans.

The views expressed are his own.