



Public Health
SEEPHI
harmonization, employability,
leadership and outreach

Sharing European Educational Experience in Public Health for Israel (SEEPHI):

Harmonization, employability, leadership and outreach

NEWSLETTER - Edition 1

Table of contents

What is SEEPHI?	2
PROJECT AIMS AND OBJECTIVES	2
METHODOLOGY	2
EXPECTED RESULTS	3
Meet the SEEPHI Team!	4
PROJECT COORDINATOR	4
ISRAEL PARTNERS	4
EUROPEAN UNION PARTNERS	6
SEEPHI Activities	8
Work Package 2: FIELD QUALIFICATION ANALYSIS IN THE ISRAELI PUBLIC HEALTH SYSTEM	8
Work Package 3: MAPPING OF THE COMPETENCY PROFILES OF THE ISRAELI SCHOOLS AND PROGRAMMES OF PUBLIC HEALTH	8
SEEPHI Events	9
KICK OFF MEETING	9
EUROPEAN PUBLIC HEALTH WEEK	9
ASPHER DEANS & DIRECTORS RETREAT	10
EUROPEAN PUBLIC HEALTH CONFERENCE	10

What is SEEEPHI?

Sharing European Educational Experience in Public Health for Israel (SEEEPHI) is a Capacity Building in Higher Education project funded through ERASMUS+, which transfers knowledge and best practices from European Union Higher Education Institutions (HEIs) to countries and HEIs outside the EU. The project begins in January 2021 and runs for three years involving ASPHER as the coordinating organization and a consortium of ASPHER Member schools (four EU HEIs[1] and four Israeli HEIs[2]) and the Israeli Association of Public Health Physicians.

PROJECT AIMS AND OBJECTIVES

AIM: Enhancement of the public health workforce (PHW) in Israel through sharing European educational experience, including: HARMONIZATION, EMPLOYABILITY, LEADERSHIP, and OUTREACH

OBJECTIVES (corresponding to five distinct core work packages:

1. Detailed analysis of field qualifications content to understand different professional roles in the Israeli public health system.
2. Mapping of the competency profiles of the Israeli schools and programmes of public health to guide HARMONIZATION between public health education and practice.
3. Introduction of a dynamic online interface to enable public health education/training – practice/workforce collaboration, supporting EMPLOYABILITY and continuing professional development.
4. Building LEADERSHIP capacity via cutting edge training in the Israeli public health schools and programmes.
5. Stakeholder engagement to secure key OUTREACH (community, inter-professional, cross-sectoral).

METHODOLOGY

In order to achieve its goals SEEEPHI brings together several key European authored tools to evaluate the current conditions and needs of the Israeli Public Health Workforce and Higher Education in the field of Public Health. Established EU best practices will then be applied to the Israeli setting based on the mapping results in order to harmonize PH educational programmes with the workforce needs and increase the employability of PH graduates. This will be accomplished in part through modernization of the HEI educational practices with emphasis in leadership training and problem-based learning as well as outreach to key stakeholders and employers in the wider Israeli Public Health System.

The tools used are as follows:

Analysis of Field Qualifications and PH educational programmes. In this preparatory work, the WHO-ASPHER Competency Framework for the Public Health Workforce in the European Region will be adapted to perform a detailed analysis of field qualifications content to understand different professional roles in the Israeli Public Health System. Concurrently, ASPHER's European Core Competences List for Public Health Professionals will be used to map the competency profiles of the Israeli schools and programmes of public health. The results from the mapping exercises will be used to identify gaps and guide harmonization between public health education and practice.

Application of the mapping results will be applied through three core actions:

ASPHER's European Public Health Reference Framework (EPHRF) will be used to guide the development of a dynamic online interface to enable public health education/training – practice/workforce collaboration, supporting employability and continuing professional development in the Israeli public health system.

Leadership capacity via cutting edge training in the Israeli public health schools and programmes, including peer-to-peer and train the trainers offerings will be established in a new PH Leadership Training Academy modeled on the Leaders for European Public Health (LEPHIE) programme.

Stakeholder engagement to secure key outreach (community, inter-professional, cross-sectoral) with key professional groups will be developed to raise awareness of PH and its roles, expanding on the successful European "This is Public Health" campaign supported by the establishment of a PH Registry.

EXPECTED RESULTS

ASPHER sees SEEEPHI as an excellent opportunity to pilot a comprehensive capacity building action in a specific country context, which may be applied in a similar manner to other countries and regions wishing to improve the employability of their PH graduates and build their Public Health Workforce capacity. A key outcome of the project will be a tested protocol that may be adapted to other settings and available to all ASPHER Members.

[1] University College Cork, Ireland; Jagiellonian University, Poland; Maastricht University, The Netherlands; Swedish Red Cross University College, Sweden

[2] Ashkelon Academic College; Hebrew University of Jerusalem; University of Haifa; Ben Gurion University of the Negev

.....

Meet the SEEPHI Team!

PROJECT COORDINATOR

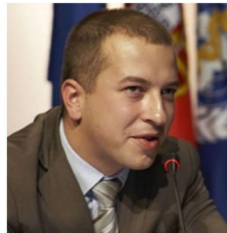
[The Association of Schools of Public Health in the European Region \(ASPHER\)](#)



John Middleton



Lore Leighton



Robert Otok

ISRAEL PARTNERS

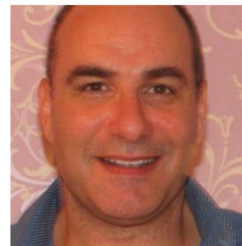
[Ashkelon Academic College](#)



Ted Tulchinsky



Osnat Bashkin



Zohar Mor

Hebrew University of Jerusalem



Yehuda Neumark

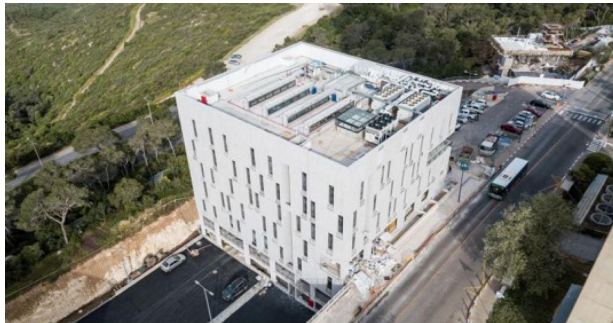


Maureen Malowany



Naham Shapiro

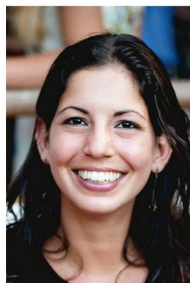
Haifa University



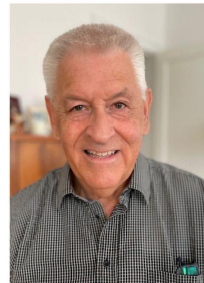
Shira Zelber Zagi



Orna Baron Aepel



Dana Ivancovsky Wajcman



Manred Green

Ben Gurion University of the Negev



Nadav Davidovitch Keren Dopelt (BGU & AAC)

Israeli Association of Public Health Physicians (IAPHP)



Hagai Levine

EUROPEAN UNION PARTNERS

University College Cork, Ireland



Fiona Maclead



Janas Harrington

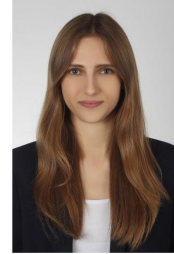


Ivan Perry

Jagiellonian University, Poland



Szczepan Jakubowski



Natalia Turosz



Mariusz Duplaga

Maastricht University, Netherlands

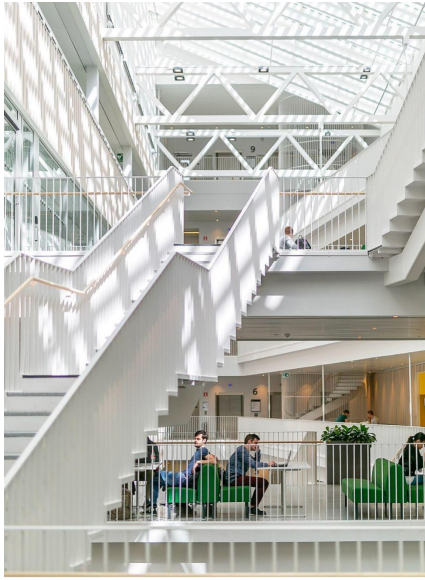


Kasia Czabanowska



Jascha de Nooijer

Swedish Red Cross University College, Sweden



Stéphanie Paillard-Borg



Leah Okenwa Emegwa



Jenny Cadstadt

SEEEPHI Activities

Year 1 of SEEEPHI is dedicated to two preparatory work packages.

Work Package 2: FIELD QUALIFICATION ANALYSIS IN THE ISRAELI PUBLIC HEALTH SYSTEM

Lead partners: Ashkelon Academic College, ASPHER

WP2 has adapted the WHO-ASPHER Competency Framework for the Public Health Workforce in the European Region (CFPHW) in order to survey the field qualifications required of employers in the Israeli Public Health System. The Framework enables standardization and consistent definition of the skills required of PH professionals. The online survey was launched in July with 130 employers and community organisations across Israel. As the first preparatory WP it will deliver a report from the survey of field qualifications.

If you wish to learn more about WP2, please contact Osnat Bashkin at obashkin@gmail.com.

Work Package 3: MAPPING OF THE COMPETENCY PROFILES OF THE ISRAELI SCHOOLS AND PROGRAMMES OF PUBLIC HEALTH

Lead partners: Hebrew University of Jerusalem, University College Cork

Working from ASPHER's European Core Competences List for the PH Professional (ECCLPHP), WP3 developed a survey for Competences survey instrument to capture what is covered at Israeli schools and programmes of public health. The List complements the definitions from the point of view of competencies and core-curricula; based on the list, the nature and activities of PH can be derived, aggregated and combined to the level of definition of the discipline. The survey was launched with Israeli HEIs in July. This second preparatory WP will produce a report and recommendations for harmonization of the offers at all academic levels from the mapping of the competency profiles of the Israeli HEIs of PH and in response to the employer and community needs (WP2).

If you wish to learn more about WP3, please contact Naham Shapiro at nahamshapiro@gmail.com.

SEEEPHI Events

KICK OFF MEETING

SEEEPHI held its Kickoff meeting with all partners in attendance on Monday 8 February and Friday 12 February. Originally planned for Brussels, the meeting was held via ZOOM due to COVID-19 conditions. ASPHER President John Middleton was on hand to welcome partners at the opening on both days. SEEEPHI's Project Officer from EACEA Lurgi Saia attended on Friday giving a short address.

Partners discussed many critical items including the Partnership Agreement, make up of the Evaluation Committee, Project budget adjustments, COVID-19 considerations, and WP schedules and content.

Although we missed meeting up in person, it was great to see the dedication and excitement of all involved to begin this ambitious project!

EUROPEAN PUBLIC HEALTH WEEK

On Wednesday 19 May, 15:30-16:30 CEST, SEEEPHI project participated in EUPHA's [European Public Health Week \(EUPHW\)](#) with a Round Table networking event to introduce the project and to discuss applying EU tools and best practices at the country and local level for the daily theme 'Your Local Community'.

The project was presented in order to discuss transferring European Good Practices locally with a welcome and introduction from ASPHER President John Middleton. Project Manager, Lore Leighton presented the overall project. Samara Segal, co-Project Manager for the

[WILLIAM project](#) was on hand to provide lessons-learned and advice from another ERASMUS+ Capacity Building project in Israel. Itamar Grotto, Director of Public Health Services joined the meeting to discuss how he sees SEEEPHI working for Israel. There was open discussion, especially in the context of the ongoing conflict between Israel and Palestine. SEEEPHI External Evaluator, Paul Barach reflected on the possibilities for the project.

ASPHER DEANS & DIRECTORS RETREAT

SEEEPHI will be represented at the Public Health Workforce Professionalisation plenary during the [2021 ASPHER Deans' & Directors Retreat](#) on 27-28 September.

EUROPEAN PUBLIC HEALTH CONFERENCE

SEEEPHI will participate in the Israel Country meeting at the annual European Public Health (EPH) Conference. The conference takes place online from 10-12 November 2021. Check back to the [EPH Conference website](#) for the schedule of country meetings.

[READ MORE ON OUR WEBSITE](#)



האוניברסיטה העברית בירושלים
THE HEBREW UNIVERSITY OF JERUSALEM

ההסתדרות
הרפואית בישראל
Israeli Medical
Association



Co-funded by the
Erasmus+ Programme
of the European Union

Sharing European Educational Experience in Public Health for Israel (SEEEPHI): Harmonization, employability, leadership and outreach (618578-EPP-1-2020-1-BE-EPPKA2-CBHE-JP) is co-funded by the EU ERASMUS+ Key Action 2: Capacity Building in the Field of Higher Education.